

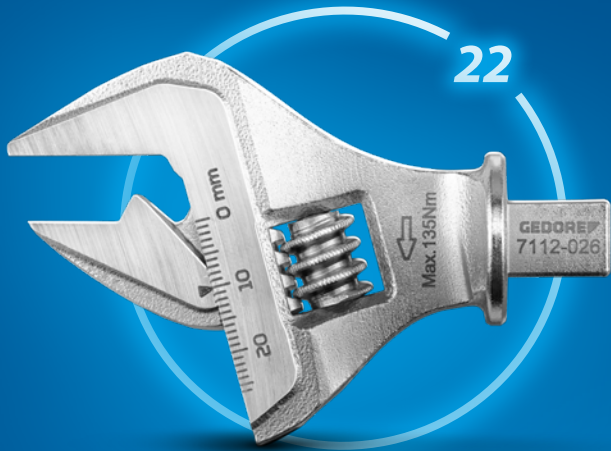


MAGIC₂₆

SELECTION

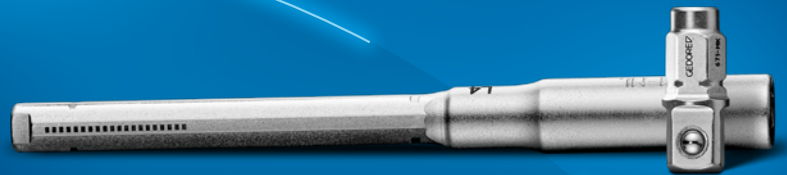
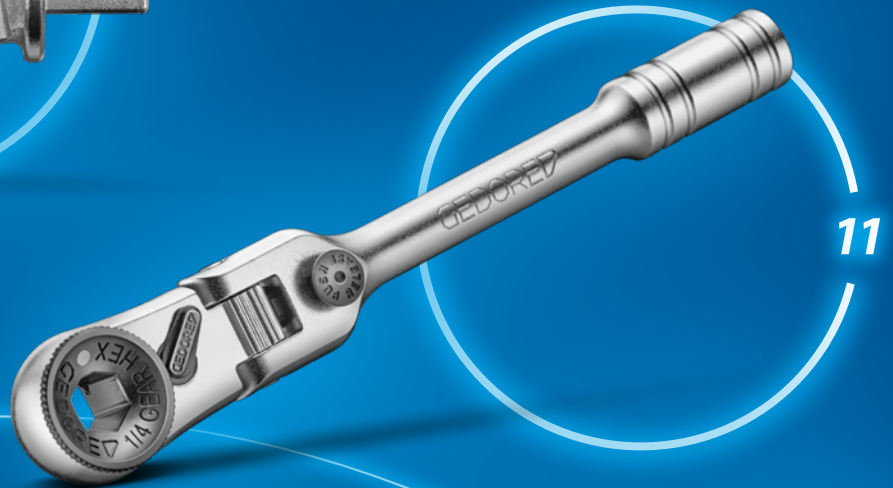
7112

9X12 INSERT OPEN-END HEAD,
ADJUSTABLE



671 M-003

MULTIFUNCTION
BIT RATCHET SET



CONTENTS

	SPANNERS	04 – 05		HAMMERS / STRIKING TOOLS	55 – 57
	SCREWDRIVERS	06 – 11		PULLERS	57 – 63
	SOCKETS AND ACCESSORIES	12 – 20		PLIERS	64 – 69
	TORQUE TOOLS	21 – 29		WORKSHOP SUPPLIES	41, 52 – 54
	WORKSHOP EQUIPMENT	30, 33 – 34, 37, 42, 44 – 45		VDE INSULATED SAFETY TOOLS	70 – 74
	TOOL ASSORTMENTS	31 – 32, 34 – 36, 38 – 40, 43 – 44		OCHSENKOPF	75
	MODULE	46 – 47		AGRI	42 – 43
	MOBILE TOOL STORAGE	48 – 52			



48

TC 666-MK-043
READY TO FIX KIT

7 UR-005

COMBINATION RATCHET SPANNER SET, REVERSIBLE

5 pieces

- › In accordance with DIN 3113, ISO 3318
- › Ring offset to 15°, reversible for right and left hand operation
- › Ratchet mechanism with 72 teeth
- › Secure grip thanks to hollow shaft - very ergonomic and handy



Code	No.	Width mm	Height mm	Pieces	Weight kg
2327651	7 UR-005	145	42	5	0,96

Contents

7 UR 8 10 13 17 19

7 R-012

COMBINATION RATCHET SPANNER SET

12 pieces

- › Practical combination of open-end wrenches with ring ratchet in straight design
- › High torque transmission enables efficient, ratcheting work
- › Secure grip thanks to hollow shaft - very ergonomic and handy



Code	No.	Length mm	Pieces	Weight kg
2297442	7 R-012	320	12	2,85

Contents

7 R 8 9 10 11 12 13 14 15 16 17 18 19

1 B-012

COMBINATION SPANNER SET

metric, 12 pieces

- › Acc. to DIN 3113, Form B, ISO 3318, ISO 7738
- › Vanadium steel 31CrV3, chrome-plated
- › Carefully forged and professionally machined
- › Ring: 10° offset from shaft, with UD profile for gentle transmission of force
- › Overloading indicated by deformation
- › The offset ring ensures a better grip on deep-seated or inset nuts or bolts
- › Top-grade industrial quality for the hardest of continuous use
- › Glare-free appearance due to matt chrome
- › Jaw: ground precisely to exact nominal size for optimum contact areas
- › Slim ribbed open end for added strength guarantees maximum torques



Code	No.	Contents	Pieces	Weight kg
6012170	1 B-012	10 11 12 13 14 17 19 22 24 27 30 32 mm	12	3,39



6-120 DOUBLE OPEN ENDED SPANNER SET

12 pieces

- > With flat heads
- > Jaw: ground precisely to exact nominal size for optimum contact areas
- > Secure grip thanks to slim profile shaft
- > Overloading indicated by deformation



Code	No.	Contents	Pieces	Weight kg
6077890	6-120	6x7 8x9 10x11 12x13 14x15 16x17 18x19 20x22 21x23 24x27 25x28 30x32	12	2,47

KL-4007-500 UNIVERSAL SPANNER EXTENSION

- > For easy extension of open-end spanners, combination spanners, offset combination spanners, and angled pin spanners
- > Required, for example, when loosening stuck screw connections in places which are difficult to access



Code	No.	Length mm	Weight kg
3406504	KL-4007-500	380	0,65

2150-2160 PH

3C-SCREWDRIVER SET

6 pieces / 10 pieces

- > For PH slot and crosshead screws
- > Ergonomic 3-component handle Power-Grip³ for maximum power transmission with minimum stress on the hand
- > Hanging hole on handle for space-saving storage
- > Type of drive marked at end of the handle



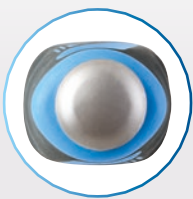
Code	No.	Contents	Pieces	Weight kg
1482319	2150-2160 PH-06	3K screwdriver bit slot no. 2150 SW 4 5.5 6.5 8mm 3K screwdriver Phillips No. 2160 PH 1 2	6	0,71
1482343	2150-2160 PH-010	3C-Screwdriver slotted No. 2150 5.5 6.5 8 3C-Screwdriver Phillips No. 2160 PH 1 2 Phase tester 3,5	10	0,825

SK 2154 PH-06

3C-SCREWDRIVER SET WITH STRIKING CAP

6 pieces

- > For tight-fitting slotted and Phillips screws PH
- > With an additional hexagon drive on the hexagonal blade and striking cap
- > Ergonomic 3-component handle Power-Grip³ for maximum power transmission with minimum stress on the hand
- > Hanging hole on handle for space-saving storage



Code	No.	Contents	Pieces	Weight kg
1878743	SK 2154 PH-06	Screwdriver with striking cap slotted No. 2154SK, 4.5 5.5 6.5 8 mm Screwdriver with striking cap Phillips No. 2160SK PH, 1 2 mm	6	0,95

H 42 CKEL-09

OFFSET ALLEN KEY SET

colour coded, 9 pieces

- > For loosening and tightening hexagon socket screws
- > Ball head enables screwing in places that are difficult to access
- > Colour coding simplifies the assignment of the correct key width
- > Abrasion-resistant powder-coated



Code	No.	Contents	Pieces	Weight kg
3297470	H 42 CKEL-09	42 CKEL 1,5 2,2,5 3 4 5 6 8 10	9	0,41

H 42 EL-88

OFFSET SCREWDRIVER SET

for hexagon socket screws, extra-long, 8-piece

- > Most common sizes in a kit
- > In blue plastic holder (LPDE)
- > Acc. to DIN ISO 2936
- > Vanadium steel 61CrSiV5, galvanised



Code	No.	Contents	Pieces	Weight kg
1505416	H 42 EL-88	Offset screwdriver No. 42 2,2,5 3 4 5 6 8 10 mm	8	0,425

H 42-10

OFFSET SCREWDRIVER SET

for hexagon socket screws, 10-piece

- > Most common sizes in a kit
- > In blue plastic holder (LPDE)
- > Acc. to DIN ISO 2936
- > Chrome vanadium steel 61CrSiV5, galvanised



Code	No.	Contents	Pieces	Weight kg
1505408	H 42-10	Offset screwdriver No. 42 1,3 1,5 2,2,5 3 4 5 6 8 10 mm	10	0,259

H 42 DKEL-88

OFFSET SCREWDRIVER SET

for hexagon socket screws, extra-long, with double ball head, 8-piece

- > Most common sizes in a kit
- > 2 ball heads and extra short angle side for optimum working in confined spaces
- > Better accessibility and low overall height allow screwing without problems where normal offset screwdrivers fail
- > Rapid progress in work since the two ball ends allow protrusions to be gone round
- > Reduces the risk of injury to the fingers when working on flat surfaces



Code	No.	Contents	Pieces	Weight kg
2797186	H 42 DKEL-88	42 DKEL 2,2,5 3 4 5 6 8 10	8	0,38

2675 K

SILENTGEAR RATCHETING SCREWDRIVER, QUICK RELEASE

short pattern

- > Very compact ratcheting screwdriver
- > For precise work in the tightest spaces
- > Bit holder with quick-release function and integrated magnet
- > Ejection aid for bits when the lock is actuated
- > Very small return angle, almost 0° (not measurable with mechanical measuring devices)
- > Forward/reverse selection via rotating ring; neutral center position with ratchet lock allows screwing without ratchet function
- > Very robust and silent mechanism ensures long service life
- > Glass-fiber reinforced nylon and hand-friendly TPE provide optimal feel and ergonomic handling

**Short design for work
in confined spaces**



**Small return angle for
efficient, comfortable work**

**Quick-change 1/4" bit holder
with Easy Fit System for fast
loading and secure fastening**



Code	No.	Drive square inch	Drive square mm	Length mm	Blade length mm	Handle width mm	Weight kg
3544532	2675 K	1/4"	6,3	167	58	32	0,164

666-045

TORSION BIT SET

45 pieces

- > Comprehensive range with the most common bit profile sizes
- > Bits with torsion zone to protect the bit profile from wear
- > Colour coding simplifies profile recognition and assignment
- > 1/4" square adapter for more flexibility



Code	No.	Length mm	Width mm	Height mm	Pieces	Weight kg
3459519	666-045	190	120	45	45	0,57

Contents

1/4" Screwdriver bits PH 1 1 2 2 2 2 3 3, 1/4" Screwdriver bits PZ 1 1 2 2 2 2 3 3
 1/4" TX T10 T10 T15 T15 T20 T20 T20 T25 T25 T25 T30 T30 T40 T40
 1/4" Internal hex 3 3 4 4 5 5 6 8 mm
 Socket, magnetic, with 1/4" hexagon drive 8mm, L.67mm
 Socket, magnetic, with 1/4" hexagon drive 10mm, L.67mm
 Socket, magnetic, with 1/4" hexagon drive 13mm, L.67mm
 Drive adapter 1/4" hexagon x 1/4" square, L. 50mm, 1/4" Bit-Adapter with safety device

666-032

TORSION BIT BOX

32 pieces

- > Extensive range with 25, 50, 70 mm bits
- > Bits with torsion zone to protect the bit profile from wear and tear
- > Color coding simplifies profile identification and assignment
- > Bit holder modules can be swiveled 45°+ 90°
- > Integrated storage box for accessories



Code	No.	Length mm	Width mm	Height mm	Pieces	Weight kg
3517470	666-032	153	117	38	32	0,47

Contents

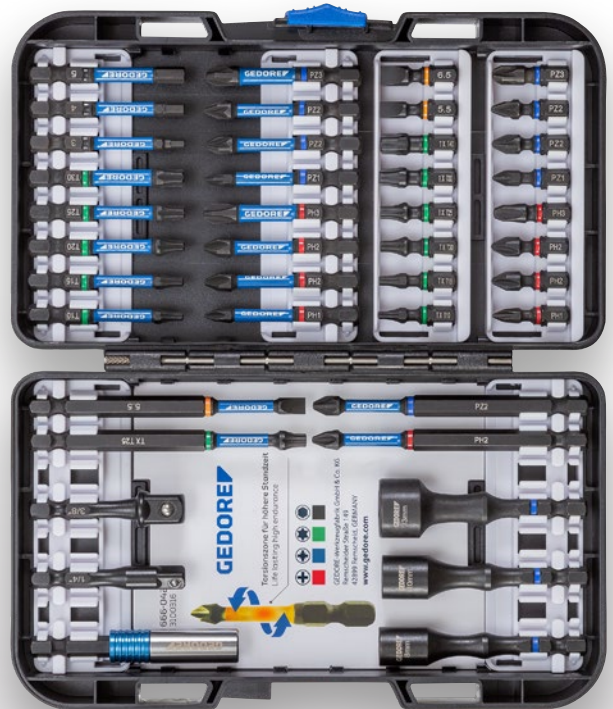
1/4" Bits, 25mm: 1/4" Cross recess PH 1 2 2 3, 1/4" Cross recess PZ 1 2 3
 1/4" TX T10 T15 T20 T25 T30, 1/4" IN 3 4 5 6
 1/4" Bits, 50mm: 1/4" Hexagon 4 5 6 mm, 1/4" Cross recess PH 2
 1/4" Cross recess PZ 2, 1/4" TX T15 T20 T25
 1/4" Bits, 70mm: 1/4" Cross recess PH 1 2, 1/4" Cross recess PZ 1 2, 1/4" TX T15 T20 T25
 BIT accessory box empty, Bit holder 1/4", One-touch Slim Lock, L.66,5mm

666-042

TORSION BIT SET

42 pieces

- > Torsion zone to protect bits under load. Peak torques are gently cushioned, which increases the lifetime
- > Incl. extremely slim, self-locking magnetic bit holder with quick change function
- > For soft and hard bolting tasks
- > Suitable for use with Impact sockets
- > Colour code marking



Code	No.	Length mm	Width mm	Height mm	Pieces	Weight kg
3100316	666-042	190	120	45	42	0,678

Contents

1/4" Bits, 25mm: 1/4" slotted 5.5, 6.5 mm, 1/4" PH 1 2 2 3
 1/4" PZ 1 2 2 3, 1/4" TX T10 T15 T20 T25 T30 T40
 1/4" Bits, 50mm: 1/4" hexagon 3 4 5 mm, 1/4" PH 1 2 2 3
 1/4" PZ 1 2 2 3, 1/4" TX T10 T15 T20 T25 T30
 1/4" Bits, 88.9mm: 1/4" slotted 5,5 mm
 1/4" PH 2, 1/4" PZ 2, 1/4" TX T25
 Drive adapter 1/4" hexagonal x 1/4" square, L. 50mm
 Drive adapter 1/4" hexagonal x 3/8" square, L. 50mm
 Socket, magnetic, with 1/4" hex drive 8mm, L.67mm
 Socket, magnetic, with 1/4" hex drive 10mm, L.67mm
 Socket wrench insert, magnetic, with 1/4" hex drive 13mm, L.67mm
 Bit-Holder 1/4", One-touch Slim Lock, L.66,5mm

670 M

1/4" BIT SCREWDRIVER

- > Compact 1/4" bit screwdriver with ergonomic 2K handle
- > Combines the advantages of a classic screwdriver with the flexibility of a bit system
- > Compact handle with an innovative shape for high torque transmission and comfortable handling
- > Slim bit-holder design for tight spaces
- > Strong magnet holds screws securely on the bit
- > Suitable for all common 1/4" bits
- > Anti-roll protection and hanging hole for ready-to-hand storage

Compact 1/4" bit screwdriver with ergonomic 2-component handle

Strong magnet holds screws securely on the bit

Anti-roll guard and hanging hole for ready-to-grab storage



Slim bit holder for tight spaces



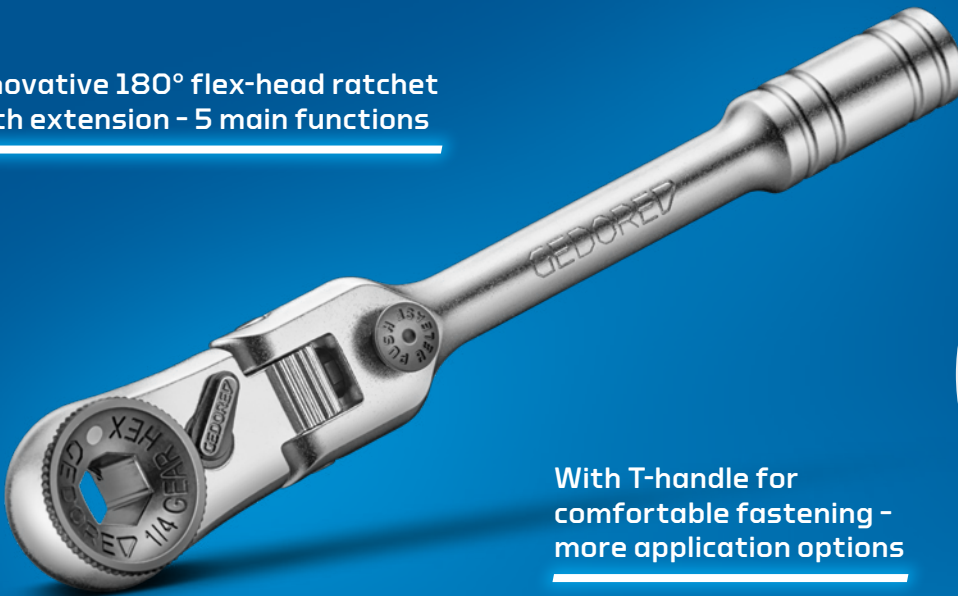
Code	No.	Drive connector hexagon female	Drive connector hexagon female mm	Total length mm	Weight kg
3543854	670 M	1/4"	6,3	97	0,14

671 M-003

MULTIFUNCTION BIT RATCHET SET

- > Multifunctional 1/4" bit ratchet set: 5 features, 1 tool
- > Maximum versatility: bit ratchet, 1/4" square ratchet, T-handle, swivel head, extension
- > Universal for bits and 1/4" sockets with adapter
- > Compact, flexible bit ratchet with 180° swivel head
- > Extension at the end of the handle makes deep installation spaces easy to reach
- > T-handle function: guide the extension (laser-marked area) through the ratchet head (white dot)
- > Very quick and precise adjustment via push button
- > With compact holder for mobile use
- > High torque: ratchet max. 65 Nm; 1/4" handle end max. 50 Nm

Innovative 180° flex-head ratchet with extension - 5 main functions

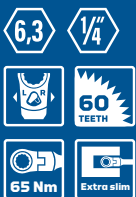


Usable as a bit ratchet and a 1/4" ratchet (with adapter)



With T-handle for comfortable fastening - more application options

In a compact holder for secure, mobile use



Code	No.	Contents
3543870	671 M-003	1/4" multifunctional bit ratchet 671 M Extension 671-M, 1/4" square adapter 671-MK

Pieces	Weight kg
3	0,105

2093 U-20

1/4" REVERSIBLE RATCHET

- > For hand-operated sockets and accessories with square drive as per DIN 3120 - C 6.3, ISO 1174, ball locking device
- > Universal use in industry and automotive, even in confined spaces
- > Small, drop shaped head for confined spaces
- > Fine-toothed (40 teeth), with lever change and push-button release
- > Non-slip 2-component handle with suspension hole

6,3 1/4"



Code	No.	Square drive inch	Square drive mm	Return angle
1703749	2093 U-20	1/4"	6,3	9°
Length mm	Ratchet head height mm	Number of teeth	Weight kg	
130	20	40	0,095	

1993 TU-10

1/2" TELESCOPIC REVERSIBLE RATCHET

- > Long lever arm for high torques, max. torque 600 Nm
- > Adjustable from 400 to 600 mm in eight steps
- > With push button release
- > For hand-operated sockets and accessories with square drive as per DIN 3120 - C 12.5, ISO 1174, ball locking device
- > Locking mechanism can be operated with one hand

1/2" 12,5



Code	No.	Square drive inch	Square drive mm	variable length mm	Return angle
3041859	1993 TU-10	1/2"	12,5	400-600	7,5°
Return angle	Number of teeth	Weight kg			
7,5°	48	1,31			

3093 U-20

3/8" REVERSIBLE RATCHET

- > For hand-operated sockets and accessories with square drive as per DIN 3120 - C 10, ISO 1174, ball locking device
- > Universal use in industry and automotive, even in confined spaces
- > Small, drop shaped head for confined spaces
- > Fine-toothed (60 teeth), with lever change and push-button release
- > Non-slip 2-component handle with suspension hole

10 3/8"



Code	No.	Square drive inch	Square drive mm	Return angle
1556800	3093 U-20	3/8"	10	6°
Length mm	Ratchet head height mm	Number of teeth	Weight kg	
200	29,7	60	0,292	

1993 ALU-10

1/2" ALUMINIUM REVERSIBLE RATCHET

- > For hand-operated sockets and accessories with square drive as per DIN 3120 - C 12.5, ISO 1174, ball locking device
- > Particularly light for ergonomic and force-saving work
- > Design similar to DIN 3122, ISO 3315
- > With lowered switch lever
- > Locks in the middle position: When the lever is flipped, it automatically engages for clockwise or anti-clockwise operation
- > Forged and hardened from special aluminium
- > Return angle 7.5°

1/2" 12,5



Code	No.	Square drive inch	Square drive mm	Return angle
6142700	1993 ALU-10	1/2"	12,5	7,5°
Length mm	Ratchet head height mm	Number of teeth	Weight kg	
275	39	48	0,34	

1993 GU-10 XL

SWIVEL HEAD REVERSIBLE RATCHET 1/2"

extra long

- > Extra long version
- > 180° swivelling
- > With push button release
- > For hand-operated sockets and accessories with square drive as per DIN 3120 - C 12.5, ISO 1174, ball locking device



Code	No.	Square drive inch	Square drive mm	Return angle	Length mm	Weight kg
2018934	1993 GU-10 XL	1/2"	12,5	7,5°	615	1,19

1993 U-10 L

REVERSIBLE RATCHET 1/2"

Long pattern

- > Acc. to DIN 3122, ISO 3315
- > Locks in the middle position: When the lever is flipped, it automatically engages for clockwise or anti-clockwise operation
- > With push button release
- > For hand-operated sockets and accessories with square drive as per DIN 3120 - C 12.5, ISO 1174, ball locking device



Code	No.	Square drive inch	Square drive mm	Return angle
6154550	1993 U-10 L	1/2"	12,5	7,5°
Length mm	Number of teeth	Weight kg		
350	48	0,62		

1993 U-20

1/2" REVERSIBLE RATCHET

- > For hand-operated sockets and accessories with square drive as per DIN 3120 - C 12.5, ISO 1174, ball locking device
- > Acc. to DIN 3122, ISO 3315
- > Small, drop shaped head for confined spaces
- > Fine-toothed (60 teeth), with lever change and push-button release



Code	No.	Square drive inch	Square drive mm	Return angle	
1436686	1993 U-20	1/2"	12,5	6°	
Length mm	Ratchet head height mm	Number of teeth	Weight kg		
275	37,5	60	0,52		

KL-4007-411

3/4" SWIVEL HANDLE

- > Extra long version (980 mm) with 180° joint
- > Suitable for extremely tight screws



Code	No.	Drive connector square	Drive connector square mm	Total swivel angle	Load (max.) Nm	Length mm	Weight kg
2941554	KL-4007-411	3/4"	20	180°	1.050	980	3,5

KL-4007-260

DEFLECTION ADAPTER KITS, 90°

- > Unique deflection adapter kit for 1/4", 3/8" and 1/2" drives
- > For reaching extremely difficult to reach bolt connections
- > Enables offsetting the drive axis and redirecting the drive force
- > Can also be combined with other adapters and extensions
- > 2x deflection adapters each per size

Three different
drive sizes (1/4",
3/8", and 1/2")



Enables an offset drive axis
and redirecting of drive force

Code	No.	Drive (square)	Angle	Storage	Pieces	Weight kg
3517330	KL-4007-260	1/4" 3/8" 1/2"	90°	in plastic insert	6	0,25

3293 U-2

3/4" REVERSIBLE RATCHET

- > For hand-operated sockets and accessories with square drive as per DIN 3120 - D 20, ISO 1174 with locking pin
- > With disc change, fine-toothed and robust



3/4" 20

Code	No.	Drive connector square	Drive connector square mm	Return angle
6278600	3293 U-2	3/4"	20	7,2°
Total length mm	Ratchet head height mm	Number of teeth	Weight kg	
500	60	50	1,435	

S 2032-05

1/4" - 3/4" ADAPTOR SET

5 pieces

- > With reducers and enlargers from 1/4" to 3/4"
- > Reducers 1930, 3020
- > Enlarger pieces 2030, 3019, 1932
- > Please note the maximum load capacities of the outer square edge according to DIN 3123, ISO 3316



6,3 1/4" 10 3/8" 12,5 1/2" 20 3/4"

Code	No.	Length mm	Width mm	Height mm	Pieces	Weight kg
1729071	S 2032-05	134	51	51	5	0,32

Contents

2030 1/4" - 3/8" Adaptor (max. 62 Nm), 3019 3/8" - 1/2" Adaptor (max. 202 Nm)
 1932 1/2" - 3/4" Adaptor (max. 512 Nm), 3020 3/8" - 1/4" Reducer (max. 62 Nm)
 1930 1/2" - 3/8" Reducer (max. 202 Nm)

KL-4080-100

SOCKETS INLAY, MAGNETIC

10 pieces

- > Special magnetic inserts with high holding force for inserting into conventional sockets
- > Suitable for hexagon and double hexagon sockets
- > Can be used with metric spanner widths from 10 to 19 mm
- > Suitable for holding screws and nuts securely



Code	No.	Pieces	Weight kg
3468941	KL-4080-100	10	0,035

D 20 KMU-20

1/4" SOCKET SET

37 pieces

- > Forged, tempered hexagon (No. 32) UD profile sockets, hand-operated
- > With robust lever-change reversible ratchet, with push-button release



6,3 1/4" 6,3 1/4" mm

Code	No.	Length mm	Width mm	Height mm	Pieces	Weight kg
1822373	D 20 KMU-20	202	119	38	37	0,712

Contents

Ratchet 2093 U-20, Inserts D 20 4 5 6 7 8 9 10 11 12 13, 680 4 5,5 6,5, 685 3 4 5 6
 685 X 5 6 8, 687 TX T10 T15 T20 T25 T27 T30 T40, 690 1 2, 690 PZD 1 2 3
 Accessories 1/4" Extension 2090-4, 620, 1/4" Multi handle 676, 699

30 HMU-10

SOCKET SET 3/8"

22 pieces

- > With forged, tempered hexagon (No. 30) or bi-hexagon (No. D 30) UD profile sockets, hand-operated
- > With accessories made from GEDORE vanadium steel 31CrV3
- > Set U-10 with reversible lever change ratchet



UNIT DRIVE 10 3/8" mm

Code	No.	Width mm	Height mm	Depth mm	Pieces	Weight kg
6235470	30 HMU-10	320	55	210	22	2,71

Contents

Ratchet 3093 U-10, Inserts 30 6 7 8 9 10 11 12 13 14 15 16 17 18 19 20 21 22
 Accessories 3/8" cross handle with sliding block 3087
 3/8" extension 3090-5-10, 3/8" universal joint 3095

IN 19 PM

SCREWDRIVER SET 1/2"

9 pieces

> For in-hex screws

Screwdriver set with
the most common sizes

With ball catch groove
for safe working



Ideal addition
to your tool kit

Robust metal case
for mobile use

12,5 1/2" mm

Code	No.	Contents	Length mm	Width mm	Height mm	Pieces	Weight kg
6156250	IN 19 PM	No. IN 19 5 6 7 8 9 10 12 14 17	281	79	35	9	1,4



19 BMC 20

1/4"+1/2" SOCKET SET

69 pieces

- > The GEDORE plastic ratchet box is suitable for industry, automotive as well as DIY & hobbyists
- > It is equipped with a black/blue foam check tool insert that makes missing tools easily visible
- > The droplet-like head of the reversible ratchets make this set ideal for the tightest of bolting positions
- > The reversible ratchets features a dual material handle, lever change and press-button release for easy, rapid and safe working
- > Depending on the wrench size, the sockets can be extended up to 375 mm in the drive depth

Code	No.	Length mm	Width mm	Height mm	Pieces	Weight kg
3108902	19 BMC 20	460	355	86	69	5,72

Contents

1/4" + 1/2" Ratchets
 1/4" 2093 U-20 Reversible ratchet
 1/2" 1993 U-20 Reversible ratchet
 1/4" + 1/2" Sockets
 1/4" Hexagonal sockets 4 4,5 5,5 6 7 8 9 10 11 12 13 14 mm
 1/2" Hexagonal sockets 15 16 17 18 19 21 22 24 27 30 32 mm
 1/2" Hexagonal sockets long 10 13 17 19 mm
 1/4" Bits, Hexagon socket 2 3 4 5 6 8 mm, TX; with bore T10 T15 T20 T25 T27 T30 T40
 Slotted 4 5 5,5 6 8 mm, PH 1 2 3. PZ 1 2 3, Multi-tooth XZN M4 M5 M6 M8
 1/4" + 1/2" Accessories, 1/4" Extension 50 100 mm
 Adaptor 1/4" x 1/4", Bit-Holder 1/4", T-handle 1/4"
 Universal joint 1/4", Extension 1/2" 125 250 mm
 Universal joint 1/2", T-Handle 1/2"

32 EMU-2

3/4" SOCKET SET

14 pieces

- > 3/4" sockets with hexagonal UD profile (No. 32)
- > Set U-2 with fine toothed, dial change ratchet



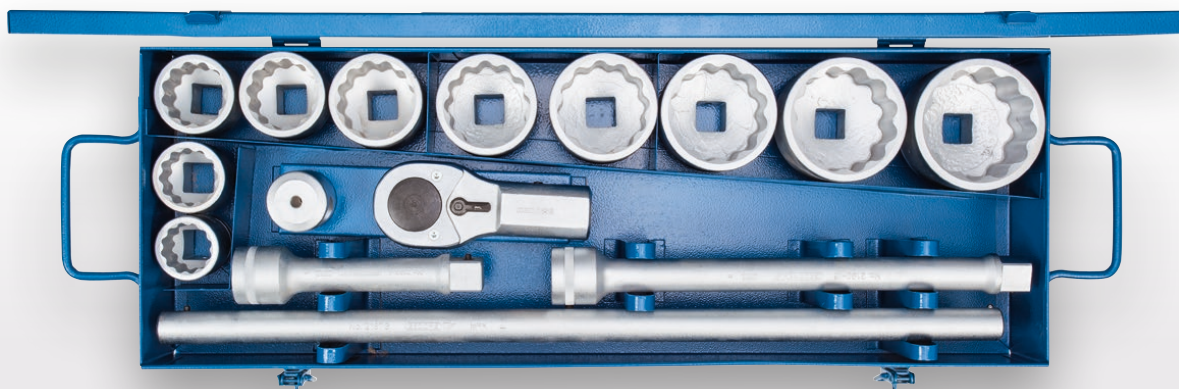
Code	No.	Contents	Length mm	Width mm	Height mm	Pieces	Weight kg
6280340	32 EMU-2	Ratchet 3293 U-2 Inserts 32 22 24 27 30 32 36 38 41 46 50 Accessories Sliding T-Handle 3287 3/4" Extension 3290-8-16	525	525	73	14	11,4

D 21 EMU-10

SOCKET SET 1"

15 pieces

- > Hand-Operated 12-corner UD-profile sockets
- > With actuation tools
- > With robust lever-change reversible ratchet
- > In GEDORE blue sheet steel case



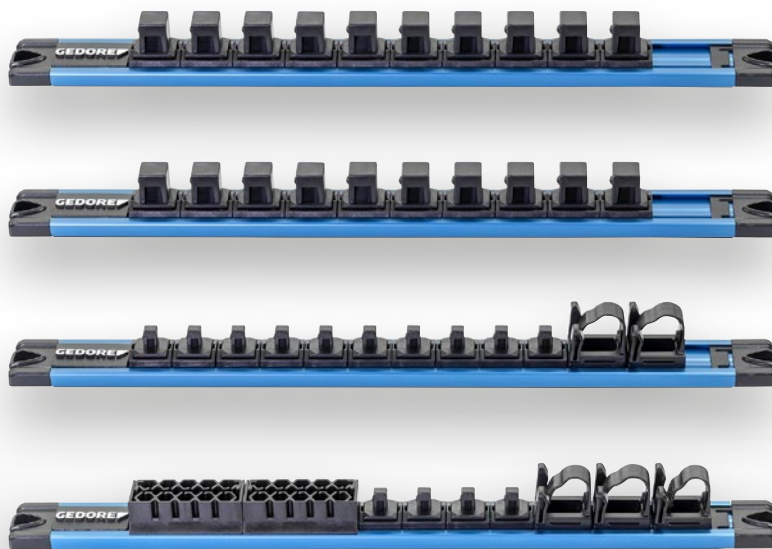
25 1" UNIT DRIVE mm

Code	No.	Contents	Length mm	Width mm	Height mm	Pieces	Weight kg
6181600	D 21 EMU-10	Ratchet 2193 U-10 K Inserts D 21 36 41 46 50 55 60 65 70 75 80 Accessories 1" extension 2190-8-16, 1" cross handle 2187 G, 2187 K	765	289	105	15	30,8

SL

"FLIP-LOCK" MAGNETIC SOCKET RAIL

- > Socket bar with slots for 1/4", 3/8", 1/2" sockets and bits (depending on model)
- > Socket bar 1/4" + BIT including accessory holders for ratchets, extensions, adapters, etc.
- > 'Flip-Lock' locking mechanism
- > Optical detection of the locking status through tilt position
- > 2 strong magnets enable secure attachment to the strip on metal objects
- > Anti-slip tape on the back of the slat prevents the slat from slipping
- > 2 drill holes allow fixed mounting on non-metallic objects



1/4" 6,3 3/8" 10 1/2" 12,5



Code	No.	Sockets	Drive connector	Length mm	Width mm	Height mm	Weight kg
3520773	SL 1910	10	1/2"	340	30	29	0,16
3520757	SL 2012	10	1/4"	340	30	34	0,16
3520765	SL 3010	10	3/8"	340	30	28	0,155
3520781	SL 6620	24	1/4"	340	30	34	0,15

KL-0100-83 K

3/4" IMPACT SOCKET SET

200 mm, 9 pieces

- > Universally suitable for wheel screw connections and other bolt connections
- > Robust 9-piece set in extra-long 200 mm version
- > For loosening and tightening deep-seated fastenings
- > Impact wrench suitable sockets with slot for retaining pin
- > Incl. reducer 1" to 3/4"

All key sizes combined
in a metal box



Suitable for
impact wrenches
with 3/4" and 1"

No power loss due
to unnecessary
extensions



Code	No.	Contents	Drive	Profile	Plug-in insert, length mm	Length mm	Width mm	Height mm	Pieces	Weight kg
3518450	KL-0100-83 K	Impact sockets, 27–46 mm Reducer 1" to 3/4"	3/4" 1"	Hexagon	200	250	220	130	9	17

K 19 L-010

1/2" IMPACT SOCKET SET

long, 10 pieces

- > 10-piece set that covers the most common wrench sizes
- > Even deeper lying screws can be reached without additional extension
- > Suitable for machine and manual operation
- > Clear marking of the wrench widths in the case



Code	No.	Length mm	Width mm	Height mm	Pieces	Weight kg
3459195	K 19 L-010	360	140	60	10	2,97

Contents

1/2" Deep Impact sockets,
hexagon 10 13 16 17 18 19 21 22 24 27 mm

K 19-015

1/2" IMPACT SOCKET SET

15 pieces

- > Comprehensive 1/2" Impact socket set from 10 - 30mm
- > Clear marking of the wrench widths in the case
- > Suitable for machine and manual operation



Code	No.	Length mm	Width mm	Height mm	Pieces	Weight kg
3459187	K 19-015	260	146	60	15	2,14

Contents

1/2" Impact sockets hexagon
10 11 12 13 14 15 16 17 18 19 21 22 24 27 30 mm



TF-K

TORQUE WRENCH TORCOFIX TF-K

1-850 Nm / 0,75-630 lbf·ft

- > Controlled screw tightening in the range of 1 - 850 Nm / 0,75 - 630 lbf·ft
- > Incl. traceable test certificate (DIN EN ISO 6789-2:2017)
- > For controlled right- and left-hand tightening (square socket for direction change)
- > New ergonomic handle, shaped according to the natural grip position of the hand
- > Vertical alignment of the scale, torque adjustment therefore suitable for left and right handers
- > Scale line positioned directly above the scale prevents reading errors (parallax errors)
- > Unit labeling integrated in the scale frame and also protected by viewing windows



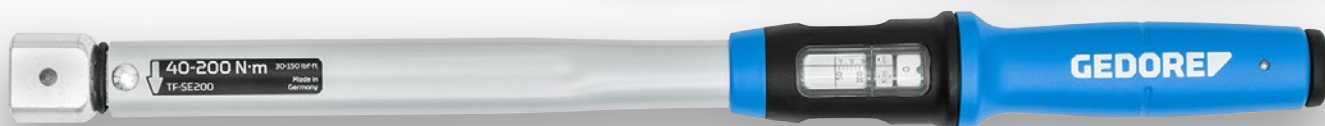
Code	No.	Type	Square drive inch	Square drive metric mm	Nm	vernier Nm	Height mm	Housing - square centre spacing mm	Length mm	Head width mm	Head height mm	Weight kg
3288226	TF-K5	Mushroom head	1/4"	6,3	1-5	0,025	39,8	17,5	223	35,0	25,3	0,432
3288234	TF-K25	Mushroom head	1/4"	6,3	5-25	0,1	39,8	17,5	273	35,0	25,3	0,68
3288242	TF-K50	Mushroom head	3/8"	10	10-25	0,25	39,8	17,5	303	35,0	25,3	0,55
3278379	TF-K100	Mushroom head	1/2"	12,5	20-100	0,5	44	22	400	44,0	36	1
3278387	TF-K200	Mushroom head	1/2"	12,5	40-200	1	45	22	495	44,0	36	1,51
3278395	TF-K300	Mushroom head	1/2"	12,5	60-300	1	47	22	585	46,0	36	1,68
3278409	TF-K400	Push-through square	3/4"	20	80-400	1	52	31,25	690	62,5	31	2,15
3278492	TF-K550	Push-through square	3/4"	20	110-550	1	51	34,5	965	69,0	31	3,62
3278514	TF-K850	Push-through square	3/4"	20	250-850	1	51	34,5	1.390	69,0	31	5,65

TF-SE

TORQUE WRENCH TORCOFIX TF-SE

5-200 Nm / 3,7-150 lbf·ft

- > For controlled right- and left-hand tightening (insert tool for change of direction)
- > Controlled screw tightening in the range of 5 - 200 Nm / 3,7 - 150 lbf·ft
- > Incl. traceable test certificate (DIN EN ISO 6789-2:2017)
- > New ergonomic handle, shaped according to the natural grip position of the hand
- > Vertical alignment of the scale, torque adjustment therefore suitable for left and right handers
- > Scale line positioned directly above the scale prevents reading errors (parallax errors)



Code	No.	Drive connector rectangular	Nm	Scale division Nm	Scale ring Nm	Total length mm	Calibration length	Stitch size mm	Weight kg
3288196	TF-SE25	9 x 12	5-25	1	0,1	261,5	261,5	17,5	0,4
3288218	TF-SE50	9 x 12	10-50	2,5	0,25	291,5	236,5	17,5	0,75
3278522	TF-SE100	9 x 12	20-100	5	0,5	378	310,3	17,5	0,77
3278530	TF-SE150	9 x 12	30-150	10	1	469	401,3	17,5	0,93
3278549	TF-SE200	14 x 18	40-200	10	1	479	411,3	25,0	1,01

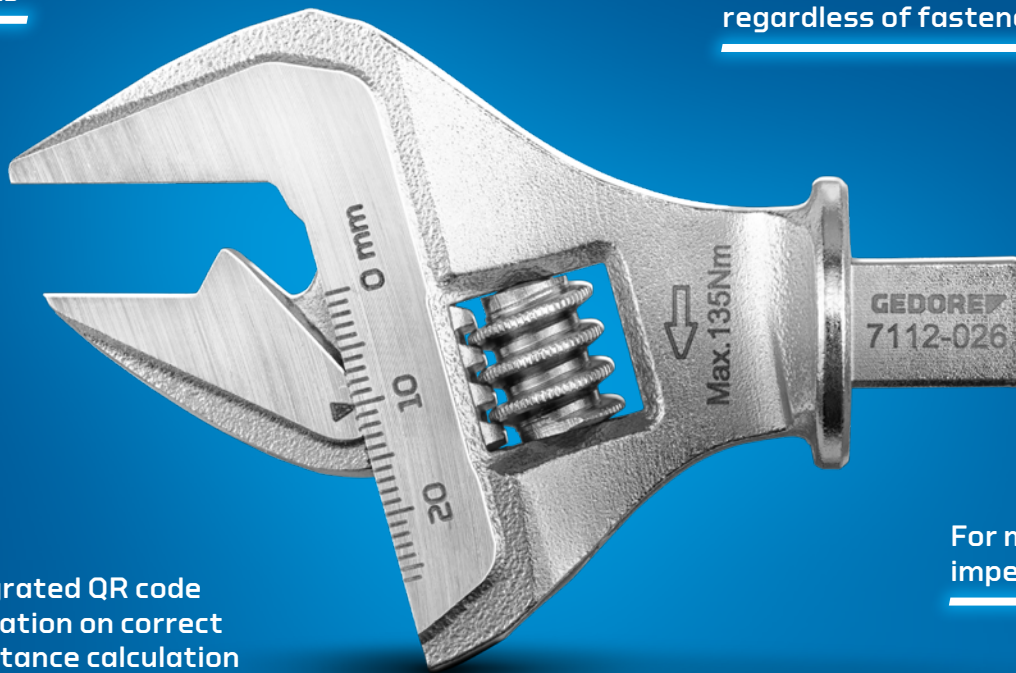
7112

9X12 INSERT OPEN-END HEAD, ADJUSTABLE

- > Versatile application thanks to flexible jaw width adjustment from 5–41 mm
- > Replaces multiple tools with fixed wrench sizes
- > Available in 3 model variants for 9x12 mount
- > Uniform center-to-center distance when adjusting jaw width simplifies calculation
- > Laser-etched adjustment scales facilitate precise jaw setting
- > Suitable for metric and imperial screw connections
- > Secure hold in the mount via integrated spring-pin lock
- > For example, suitable for torque wrenches of the Torcofix TF-SE series, DREMOMETER SE
- > Observe center-distance calculation

3 versions

Uniform center distance
regardless of fastener size



With integrated QR code
for information on correct
center-distance calculation
and application

For metric and
imperial fasteners



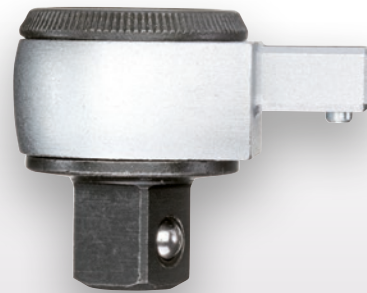
Code	No.	Size	Total length mm	Clamping reach mm	Clamping reach inch	Depth gauge	Weight kg
3544451	7112-026	8"	93	5-26	3/16-1"	63,0	0,179
3544478	7112-030	10"	105	5-30	3/16-1.3/16"	75,0	0,263
3544486	7112-041	12"	120	8-41	5/16"-1.1/2"	86,0	0,403

7412

RECTANGULAR REVERSIBLE RATCHET HEAD

9x12

- > For solving difficult assembly problems
- > SE mounting 9x12
- > 1/4" to 30 Nm continuous load capacity
- > 3/8" to 135 Nm continuous load capacity
- > 1/2" to 150 Nm continuous load capacity



Code	No.	Drive connector square	Drive connector square mm	Return angle	Head height mm	Head width mm	Depth gauge mm	Permanent load capacity	Weight kg
7672710	7412-00	1/4"	6,3	5	16,6	25	17,5	1/4" = 30 Nm	0,059
7686500	7412-01	3/8"	10	5	23,2	34	17,5	3/8" = 135 Nm	0,165
7687230	7412-02	1/2"	12,5	5	24,2	34	17,5	1/2" = 150 Nm	0,176

7712-00

INSERT ADAPTER 9X12 TO 14X18

- > Adapter enables the use of 14x18 insert tools on 9x12 mounts
- > Expands the range of applications for insert tools
- > Secure hold thanks to integrated spring-pin lock on the drive
- > For example, suitable for torque wrenches of the Torcofix TF-SE series, DREMOMETER SE



Code	No.	Drive connector rectangular	Output size rectangular	Depth gauge mm	Permanent load capacity	Length mm	Width mm	Height mm	Weight kg
3544516	7712-00	9 x 12	14 x 18	35,5	150 Nm	51,5	30	23	0,118

7718-00

INSERT ADAPTER 14X18 TO 9X12

- > Adapter enables the use of 9x12 insert tools on 14x18 mounts
- > Expands the range of applications for insert tools
- > Secure hold thanks to integrated spring-pin lock on the drive



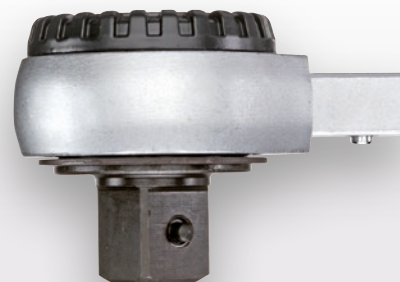
Code	No.	Drive connector rectangular	Output size rectangular	Depth gauge mm	Permanent load capacity	Length mm	Width mm	Height mm	Weight kg
3544524	7718-00	14 x 18	9 x 12	20,0	150 Nm	45	22	19	0,086

7418

RECTANGULAR REVERSIBLE RATCHET HEAD

14x18

- > For solving difficult assembly problems
- > SE mounting 14x18
- > 1/2" to 340 Nm continuous load capacity
- > 3/4" to 400 Nm continuous load capacity



Code	No.	Drive connector square	Drive connector square mm	Return angle	Head height mm	Depth gauge mm	Permanent load capacity	Weight kg
7687580	7418-02	1/2"	12,5	7,2	28,8	25,0	1/2" = 340 Nm	0,36
7687660	7418-04	3/4"	20	7,2	35,5	33,0	3/4" = 400 Nm	0,79

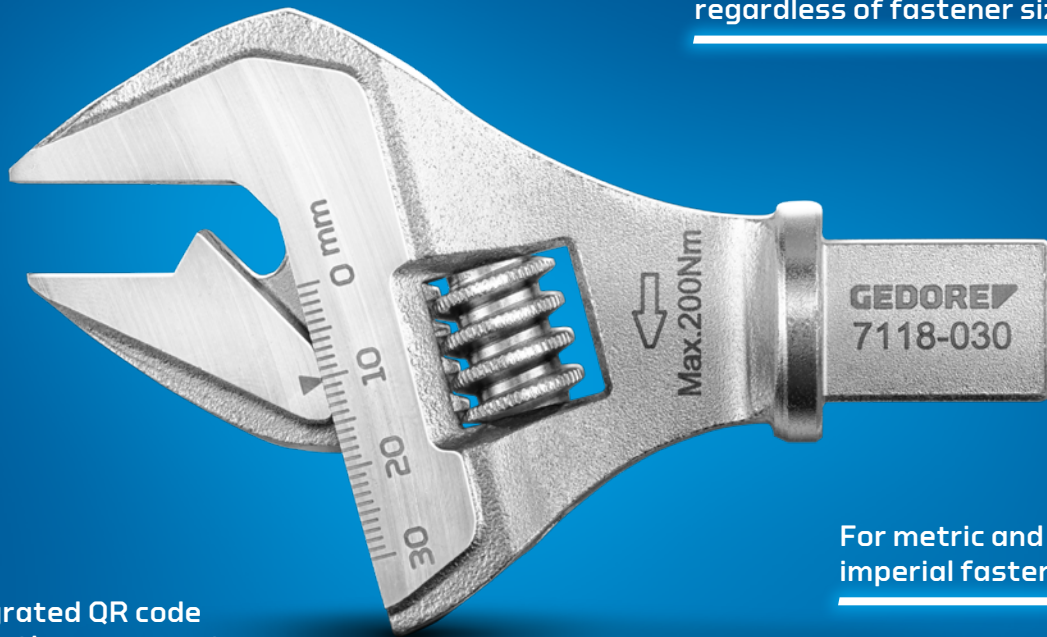
7118

14X18 INSERT OPEN-END HEAD, ADJUSTABLE

- > Versatile application thanks to flexible jaw width adjustment
- > Replaces multiple tools with fixed wrench sizes
- > Available in 2 model variants for 14x18 mount
- > Uniform center-to-center distance when adjusting jaw width simplifies calculation
- > Laser-etched adjustment scales facilitate precise jaw setting
- > Suitable for metric and imperial screw connections
- > Secure hold in the mount via integrated spring-pin lock
- > For example, suitable for torque wrenches of the Torcofix TF-SE series, DREMOMETER SE

2 versions

Uniform center distance
regardless of fastener size



With integrated QR code
for information on correct
center-distance calculation
and application

For metric and
imperial fasteners



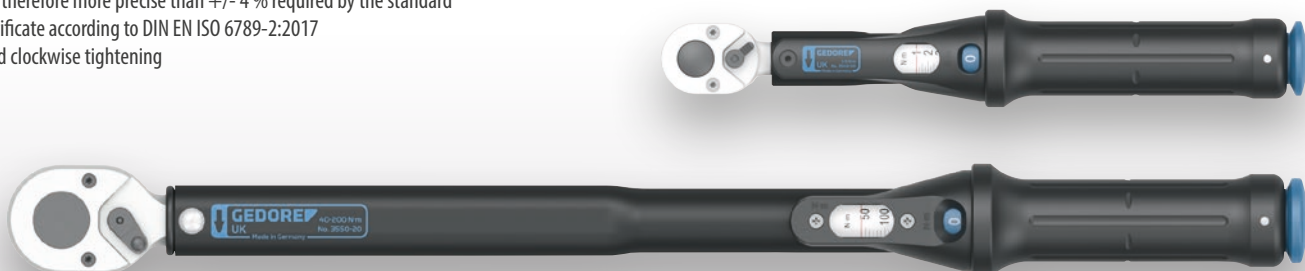
Code	No.	Size	Total length mm	Clamping reach mm	Clamping reach inch	Depth gauge	Weight kg
3544494	7118-030	10"	115	5-30	3/16-1.3/16"	75,0	0,3
3544508	7118-041	12"	130	8-41	5/16-1.1/2"	86,0	0,441

3549 UK - 3550 UK

TORQUE WRENCH TORCOFLEX UK

1-200 Nm

- > Adjustable, releasing and sturdy tubular torque wrench with integrated lever ratchet and with square drive for industry and the trades
- > Classified to DIN EN 6789: 2017 type II class A calibrated to a max. admissible deviation of +/- 3 % and therefore more precise than +/- 4 % required by the standard
- > Incl. test certificate according to DIN EN ISO 6789-2:2017
- > For controlled clockwise tightening



Code	No.	Type	Square drive inch	Square drive metric mm	Nm	vernier Nm	Height mm	Housing - square centre spacing mm	Length mm	Head width mm	Head height mm	Weight kg
2958007	3549-00 UK	Reversible ratchet	1/4"	6,3	1-5	0,025	34	12,5	225	25,0	15	0,61
2958015	3549-02 UK	Reversible ratchet	1/4"	6,3	5-25	0,1	35	12,5	285	25,0	15	0,67
2958023	3549-05 UK	Reversible ratchet	3/8"	10	10-50	0,25	34	17,5	350	35,0	19,1	0,825
2958031	3550-10 UK	Reversible ratchet	1/2"	12,5	20-100	0,5	45	21,25	410	42,5	22	1,3
2958058	3550-20 UK	Reversible ratchet	1/2"	12,5	40-200	1	44	21,3	500	42,5	22	1,52

3550-UK-LS4

1/2" TORQUE WRENCH TORCOFLEX UK SET

5 pieces

- > Reliable torque wrench with tightening range of 40-200 Nm with test certificate
- > Controlled right-hand tightening; reversible ratchet with clockwise and anti-clockwise rotation; drive: 1/2"
- > Classified as per DIN EN ISO 6789-2:2017; adjusted to a maximum permissible +/-3% deviation and thus with a greater precision than the standard-stipulated +/-4%
- > Through a 1/2" extension and power sockets with protective sleeve in sizes 17, 19, and 21 mm very suitable for changing wheels on passenger cars



Code	No.	Type	Square drive inch	Square drive metric mm	Nm	Height mm	Housing - square centre spacing mm	Length mm	Head width mm	Head height mm	Pieces	Weight kg
3107027	3550-UK-LS4	Reversible ratchet	1/2"	12,5	40-200	44	21,3	499	42,5	22	5	2,36

Contents

Torque wrench TORCOFLEX 40 -200 Nm No. 3550-20 UK, extension no. 1990-5
Impact wrench set 1/2", 3 pieces

8564-02

TORQUE WRENCH DREMOMETER

in a metal box, 750-2000 Nm

- > Controlled screw tightening in the range of 750 - 2000 Nm
- > For use in almost all industrial manufacturing areas
- > Classified according to DIN EN ISO 6789-2:2017 Type II Class A, incl. traceable test certificate, calibrated to a maximum permissible deviation of +/- 3 % and thus more precise than the +/- 4 % required by the standard
- > 1" square drive with pin-locking mechanism DIN 3120 - B 25, ISO 1174
- > Automatic short-path actuation with tactile impulse and audible signal
- > Single scale with a scale graduation of 50 Nm
- > Lightweight yet robust (as the housing is made of an aluminium alloy) and resilient, very workshop-friendly
- > No inaccuracies whether used with both hands or held away from the handle (as for standard torque wrenches)
- > Extremely low wear attributable to reduced forces in a lever mechanism
- > Maximum precision even when subjected to extreme continuous use
- > Easy operation - fast and safe torque tightening
- > Easy adjustment thanks to attractive adjusting button secured against loss at the end of the handle
- > Robust and stable sheet metal box with Tool-Check Insert



Code	No.	Type	Square drive inch	Square drive metric mm	Contents	Nm	Height mm	Housing - square centre spacing mm	Length mm	Length torque wrench with tube	Head width mm	Head height mm	Weight kg
7695680	8564-02	Single square rigid	1"	25	Extension tube 8564-92, 8572-74	750-2000	71	30	932	2353 mm	60,0	40	21,2

8576-01

TORQUE WRENCH WITH DREMOMETER DXL

520-1000 Nm / 380-730 lbf-ft

- > Controlled screw tightening in the range of 520 - 1000 Nm / 380 - 730 lbf-ft
- > For use in almost all industrial manufacturing areas
- > Audible and perceptible, automatic short-path triggering
- > Error-free operation - no change in torque values when operated outside the handle. Not length dependent
- > Double scale Nm / lbf-ft
- > Highest accuracy max. deviation of +/- 3 %
- > Certificate according to DIN EN ISO 6789:2017 part 2
- > Save effort using the optional extension tubes



Code	No.	Type	Square drive inch	Square drive metric mm	Contents	Nm	Height mm	Housing - square centre spacing mm	Length mm	Length torque wrench with tube	Head width mm	Head height mm	Weight kg
7694360	8576-01	Double square rigid	3/4"	20	ALU extension tube No. 8571-80	520-1000	35	22,5	812	1403 mm	45,0	35	4,3

8563-N-05

3/4" TORQUE WRENCH DREMOMETER DNR SET

155-760 Nm

- > Torque wrench 155-760 Nm tightening range with test certificate; with extension tube
- > Vernier scale - resolution 1.0 Nm
- > Controlled clockwise tightening; 3/4" output drive; plus clockwise rotating 3/4" add-on ratchet
- > Error-free operation due to length independence
- > Classified as per DIN EN ISO 6789-2:2017; adjusted to a maximum permissible +/-3% deviation and thus with a greater precision than the standard-stipulated +/-4%

Error-free operation thanks to length independence

Vernier scale with 1 Nm resolution

3/4" plug-in ratchet adds a ratcheting function to the DREMOMETER

Aluminum extension tube with clamping sleeve for optimal lever length adjustment



Code	No.	Type	Square drive inch	Square drive metric mm	Contents	Nm	Height mm	Housing - square centre spacing mm	Length mm	Length torque wrench with tube	Weight kg
3107043	8563-N-05	Single square	3/4"	20	DREMOMETER DN 3/4" with vernier 155-760 Nm No. 8563-N-00 Extension tube DR/DX ALU no. 8571-80 Ratchet no. 754-04	155-760	35	22,5	812	1403 mm	5,53

754

RATCHET HEAD DREMOMETER

- › In combination with the DREMOMETER for controlled right-hand tightening incl. ratchet mechanism
- › Made of chrome-vanadium steel
- › Max. Continuous load capacity of connecting square according to DIN EN ISO 6789-2017 or max. load of the receptacle



Code	No.	Drive square inch	Drive square metric	Continuous load capacity	Weight kg
7680730	754-04	3/4"	20	3/4" = 1000 Nm	1,05
7680810	754-06	1"	25	1" = 2000 Nm	1,7

8581-01

TORQUE WRENCH WITH DREMOMETER EK

600-1500 Nm

- › Torque wrench with 1" square drive 600 - 1500 Nm range
- › Single and double square for controlled right and left tightening
- › Audible and perceptible, automatic short-path triggering
- › Single scale for measuring range in Nm
- › Highest accuracy max. deviation of +/- 3 %
- › Error-free operation - no change in torque values when operated outside the handle. Not length dependent
- › Certificate according to DIN EN ISO 6789:2017 part 2
- › Save effort using the optional extension tubes



Code	No.	Type	Square drive inch	Square drive metric mm	Contents	Nm	Height mm	Housing - square centre spacing mm	Length mm	Length torque wrench with tube	Head width mm	Head height mm	Weight kg
2311267	8581-01	Single square	1"	25	Extension tube 8564-92	600-1500	71	30	932	1608 mm	60,0	40	9,55

TSN

TORQUE WRENCH TSN SLIPPER

1-55 Nm / pre-set

- › Precision mechanism slips very noticeably and audibly („click“) when the pre-set value is achieved - over-tightening is not possible
- › Controlled screw tightening in the range 1-55 Nm
- › Serial / production-line
- › Extremely long-term work
- › Pre-set torque wrench - without scale
- › Release accuracy: +/- 4% tolerance of the set value (TSN 5/45 +/- 6% tolerance)
- › Test certificate acc. to DIN EN ISO 6789



Code	No.	Type	Square drive inch	Square drive metric mm	Nm	Length mm	Weight kg
1196650	TSN 5/45	Single square ratchet	1/4"	6,3	1-5	195	0,3
7091900	TSN 25 D	Single square ratchet	1/4"	6,3	5-25	216	0,462
7092120	TSN 55	Single square ratchet	3/8"	10	15-55	324	1,075

DVI-28Z

TORQUE MULTIPLIER DREMOPLUS ALU

2800 Nm / 2050 lbf·ft

- › For industry, construction sites, commercial vehicle and automotive workshops, agricultural engineering, construction machinery, bridge, ship, aircraft, railroad construction, refineries
- › Output square with hole for Impact sockets with locking pin and ring
- › Weight-reduced thanks to the aluminum housing
- › Better than +/- 3 % accuracy



Code	No.	Output torque (max.) Nm	Output torque (max.) lbf·ft	Multiplication ratio
2653273	DVI-28Z	2800	2070	1:5,5
Version reaction arm	Drive connector square inch	Output square	Weight kg	
Z-Form, cranked	3/4"	1"	6,1	

DVV-13Z

TORQUE MULTIPLIER DREMOPLUS ALU

1300 Nm / 950 lbf·ft

- › Controlled screw tightening and loosening
- › With a single-stage planet gear
- › High-performance aluminium housing
- › Better than +/- 3 % accuracy
- › To operate with a suitable torque wrench
- › Optionally retrofittable with straight reaction arm L-shaped



Code	No.	Output torque (max.) Nm	Output torque (max.) lbf·ft	Multiplication ratio
2653370	DVV-13Z	1300	960	1:5
Version reaction arm	Drive mount, square inch	Output square	Weight kg	
Z-Form, cranked	1/2"	3/4"	3,5	

DVV-13ZG

TORQUE MULTIPLIER SET

1300 Nm / 950 lbf·ft

- › For industry, construction sites, commercial vehicle and automotive workshops, agricultural engineering, bridge, ship, aircraft and railroad construction, refineries, mechanical engineering and plant construction, maintenance
- › Mechanical hand torque multiplier for controlled screw tightening and unloosening screw connections
- › High-performance aluminium housing
- › Can be optionally retrofitted with L-form straight reaction arm - with adjustable reaction arm - of lightweight metal
- › The set contains three different 3/4" Impact sockets 27, 30, 32 mm
- › Output square with hole for Impact sockets with locking pin and ring
- › In transport case with foam insert



Code	No.	Contents	Length mm	Weight kg
2653389	DVV-13ZG	DVV-13Z, K 32 27, K 32 30, K 32 32	230	4,5

1530

SERVICE TROLLEY

- > Three large, open-access storage shelves, 200kg total load capacity
- > Flexibility due to height-adjustable middle shelf surface
- > Optimal for mobile use thanks to easy-running swivel castors
- > Compatible with GEDORE tool sets (ES or CT modules) for different applications



Code	No.	Length mm	Width mm	Height mm
3437507	1530	1.075	480	975
Max. load-bearing capacity kg		Number of shelves		Weight kg
200		3		35

2004 0511

TOOL TROLLEY

- > Working platform in ABS, with compartments for small parts
- > Storage compartment with perforated sheet (Euro perforation 10 x 38 mm), two removable drawers for small parts and door on the handle side
- > Wide drawers (W 480 x D 400 mm) fully extendable, removable
- > Load capacity per drawer 40 kg, bottom heavy-duty drawer 60 kg
- > Total load capacity 1000 kg static (750 kg dynamic)
- > Even under maximum loads, the GEDORE axle design ensures: smooth running, maneuverability and directional stability



Code	No.	RAL	Length mm	Width mm	Height mm	Drawers	Max. load-bearing capacity kg	Number of drawers	Crosswise divider	Lengthwise divider	Weight kg
1640739	2004 0511	RAL 5017	865	605	1.020	5x Type 1, H = 67 mm 1x Type 2, H = 137 mm 1x Type 3, H = 207 mm	1000	7	2	3	85

1500 ES-02-2004

TOOL TROLLEY WITH 207-PIECE TOOL ASSORTMENT

- › High-performance tool trolley in proven GEDORE industrial quality with basic equipment for the commercial sector or the ambitious do-it-yourselfer
- › Tools in metric dimensions
- › Proven GEDORE ES tool modules in ABS plastic
- › Resistant against oils and grease



Code	No.	Length mm	Width mm	Height mm	Drawers	Number of drawers	Pieces	Weight kg
2657708	1500 ES-02-2004	865	605	1.020	6x Type 1, H = 67 mm 2x Type 2, H = 137 mm	8	207	117,1

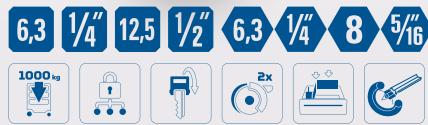
Contents

Combination spanner No. 1 B 6 7 8 9 10 11 12 13 14 15 16 17 18 19 20 21 22, Allen keys No. 42 2 2,5 3 4 5 6 8 10
 Double open-end spanner No. 6 6x7 8x9 10x11 12x13 14x15 16x17 18x19 20x22 21x23 24x27
 1/2" Socket No. 19 10 11 12 13 14 15 16 17 18 19 21 22 23 24 26 27 28 30 32, 1/2" Impact socket No. K 19 10 13 14 17 19, 1/2" Screwdriver socket slotted No. IS 19 10x1.6 12x2
 1/2" Screwdriver socket PH No. IKS 19 2 3 4, 1/2" Screwdriver socket XZN No. INX 19 8 10, 1/2" Screwdriver socket TX No. ITX 19 T20 T25 T27 T30 T40 T45 T50 T55 T60
 1/2" Screwdriver socket TX, long No. ITX 19 L T20-100 T25-100 T27-100 T30-100 T40-100 T45-100 T50-100 T55-100 T60-100, 1/2" Screwdriver socket No. IN 19 5 6 7 8 9 10 12 14 17
 1/2" Screwdriver socket, long No. IN 19 L 5-90 6-90 8-90 10-140 12-140 14-140, 1/2" Reversible ratchet 1993 U-20
 1/2" T-handle No. 1987, 1/2" Universal joint No. 1995, 1/2" Extension No. 1990-5-10, 1/4" Socket No. 20 4 5 5.5 6 7 8 9 10 11 12 13 14
 1/4" Screwdriver socket for in-hex No. IN 20 3 4 5 6 8, 1/4" Socket wrench for external TX No. TX 20 E4 E5 E6 E7 E8 E10
 1/4" Screwdriver socket for internal TX No. ITX 20 T8 T9 T10 T15 T20 T25 T27 T30 T40
 1/4" T-handle No. 2087, 1/4" Extension No. 2090-4, 1/4" Universal joint No. 2095, 1/4" Driving handle No. 2098, 1/4" Reversible ratchet No. 2093 U-10
 5/16" Screwdriver bit slotted No. 880 7 8 9 12, 5/16" Screwdriver bit in-hex No. 885 5 6 8 10, 5/16" Screwdriver bit No. 890 1 2 3 4, TX Gauge No. 708
 Socket wrench with 2C-T-Handle No. 2133 5,5 6 7 8 9 10, Open-end spanner with ring ratchet No. 7 R 8 10 12 13 14 15 16 17 18 19
 3C-Screwdriver for slotted No. 2150 4 5.5 6 5 8, 3C-Screwdriver for No. 2160 PH 1 2
 Adaptor 5/16" hexagon - 1/2" square No. KB 819, Circlip pliers for external retaining rings No. 8000 A 1 A 2 A 21
 Circlip pliers for internal retaining rings No. 8000 J 1 J 2 J 21, Universal pliers No. 142 10 JC, Power combination pliers No. 8250-180 JC
 Flat nose pliers No. 8132-160 JC, Power side cutters No. 8316-160 JC, Flat chisel, octagonal No. 97-250
 Cross-cut chisel, octagonal No. 98-125, Drift punch, octagonal No. 99 12-5, Centre punch, octagonal No. 100-12
 Pin punch, octagonal No. 119-1.5 3 4, Engineer's hammer No. 600 H-300, Thread file No. 140, Steel tape measure No. 4534-5
 TX Gauge No. 708, Digital measuring calliper No. 711, Tweezers No. 720, Scriber No. 745
 1/2" Screw remover No. K 1900, Distance module empty No. 1500 ED-70 K, 475x77x40 mm [6x], Tool trolley with 8 drawers No. 2004 0620

1500 ES-03 2004

TOOL TROLLEY WITH 325-PIECE TOOL ASSORTMENT

- > High-performance tool trolley in proven GEDORE industrial quality with extensive industrial range for professionals
- > Tools in metric dimensions
- > Proven GEDORE ES tool modules in ABS plastic



Code	No.	Length mm	Width mm	Height mm	Drawers	Number of drawers	Pieces	Weight kg
2657716	1500 ES-03-2004	865	605	1.020	8x Type 1, H = 67 mm 1x Type 2, H = 137 mm	9	325	138,4

Contents

1/4" Reversible ratchet No. 2093 U-10, 1/4" T-handle No. 2087, 1/4" Extension No. 2090-4, 1/4" Universal joint No. 2095, 1/4" Square handle No. 2098
 1/4" Socket hexagon No. 20 4 5 5.5 6 7 8 9 10 11 12 13 14, 1/4" Socket No. 20 L 4 4.5 5 6 7 8 9 10 12 13, long
 1/4" Screwdriver socket in-hex No. IN 20 3 4 5 6 8, 1/4" Socket TX No. TX 20 E4 E5 E6 E7 E8 E10
 1/4" Screwdriver bit in-hex No. ITX 20 T8 T9 T10 T15 T20 T25 T27 T30 T40, 1/4" Screwdriver bit slotted No. 680 4 5.5 6.5 8, 1/4" Screwdriver bit in-hex No. 685 2.5 3 4 5 6
 1/4" Screwdriver bit in-hex No. 685 X 5 6 8, 1/4" Screwdriver bit in-hex No. 687 TX T6 T7 T8 T9 T10 T15 T20 T25 T27 T30 T40
 1/4" Screwdriver bit PH No. 690 1 2 3, 1/4" Screwdriver bit PZ No. 690 PZD 1 2 3, 1/4" Bit holder No. 699, 1/4" Bit holder No. 620, 1/4" Multi handle No. 676
 1/2" Reversible ratchet No. 1993 U-20, 1/2" T-handle No. 1987, 1/2" Universal joint No. 1995, 1/2" Extension No. 1990-5-10
 1/2" Socket hexagon No. 19 10 11 12 13 14 15 16 17 18 19 21 22 23 24 26 27 28 30 32, 1/2" Socket hexagon No. IS 19 10x1.6 12x2
 1/2" Socket hexagon No. IKS 19 2 3 4, 1/2" Screwdriver socket in-hex No. IN 19 5 6 7 8 9 10 12 14 17
 1/2" Screwdriver socket in-hex No. IN 19 L 5-90 6-90 8-90 10-140 12-140 14-140, long, 1/2" Screwdriver socket TX No. ITX 19 T20 T25 T27 T30 T40 T45 T50 T55 T60
 1/2" Screwdriver socket TX No. ITX 19 L T20-100 T25-100 T27-100 T30-100 T40-100 T45-100 T50-100 T55-100 T60-100, long
 1/2" Screwdriver socket XZN No. INX 19 8 10, 1/2" Impact socket hexagon No. K 19 10 13 14 17 19, 1/2" Screwdriver bit slotted No. 880 7 8 9 12
 5/16" Screwdriver bit in-hex No. 885 5 6 8 10, 5/16" Screwdriver bit crosshead PH No. 890 1 2 3 4, Adaptor 5/16" hexagon - 1/2" square No. KB 819
 Insert holder 1/4" hexagon - 1/4" square No. 673 6.3, Combination holding tool No. 639, Adjustable open-end wrench No. 60 P 8 10"
 Combination spanner UD-profile No. 1 B 6 7 8 9 10 11 12 13 14 15 16 17 18 19 20 21 22, Open-end spanner with ring ratchet UD-profile No. 7 R 8 10 12 13 14 15 16 17 18 19
 Double ring-end spanner UD-profile No. 2 6x7 8x9 10x11 12x13 14x15 16x17 18x19 20x22, Double ended flare nut spanner No. 400 8x10 10x11 12x14 13x15 17x19
 Double ring-end spanner No. 6 6x7 8x9 10x11 12x13 14x15 16x17 18x19 20x22 21x23 24x27, Double-ended spanner UD-profile No. 34 8x9 10x11 12x13 14x15 16x17
 3C-Screwdriver slotted No. 2150 4 5.5 6.5 8, 3C Screwdriver slotted No. 2160 PH 1 2, 3C-Screwdriver TX No. 2163 TX T8 T10 T15 T20 T25 T30
 VDE Screwdriver slotted No. VDE 2170 4 5.5 6.5 8, VDE Screwdriver PZ No. VDE 2160 PZ 1 2, Offset screwdriver No. DT 2142 2.2.5 3 4 5 6 7 8 10
 Offset screwdriver set in holder 8pcs No. PH 42-88 (2.2.5 3 4 5 6 8 10), Allen key set No. H 42 KEL-88, hexagon 2.2.5 3 4 5 6 8 10 mm, ball end
 Offset screwdriver set TX No. H 43 KTX-07, TX T10 T15 T20 T25 T27 T30 T40, Bolt extractor set No. 8551-55, M3-M18, Universal pliers 10", 15 settings No. 142 10 C
 VDE Power combination pliers No. VDE 8250-180 H, VDE Flat nose pliers No. VDE 8132-160 H, VDE Side cutter No. VDE 8314-160 H, Voltage tester slotted No. 4615 3, 220-250 V, 3mm
 Circlip pliers for external retaining rings, straight No. 8000 A 1 2, Circlip pliers for external retaining rings, offset No. 8000 A 21
 Circlip pliers for internal retaining rings, straight No. 8000 J 1 2, Circlip pliers for internal retaining rings, offset No. 8000 J 21
 Grip pliers No. 137 10, Centre punch No. 100-12, Pin punch No. 119-1.5 -3 -4, Flat chisel No. 97-250, Cross-cut chisel No. 98-125, Drift punch No. 99 12-5, Scraper No. 133 K
 Engineers' hammer ROTBAND-PLUS No. 600 H-300, Thread file metric No. 140, Steel tape measure 5m No. 4534-5, TX Gauge No. 708 (2X)
 Digital measuring caliper No. 711, Tweezers with angled tips No. 720, Scriber No. 745, Key file set No. 8728 Flat butt, 3-edge, 4-edge, half-round, round file
 Cable knife No. 0513-09, 195 mm, Crossbeam 2-arm No. 106/103, Crossbeam 3-arm No. 107/103, Spindle No. 1.1406140, Pulling leg No. 106/5100-E [3x]
 Miniature LED light No. 649, Distance module empty No. 1500 ED-70 K, 475x77x40 mm [7x], Tool trolley with 9 drawers No. 2004 0810

MAGIC 2005 0511-7016

TOOL TROLLEY

- > Black Edition special model
- > ABS worktop with small part compartments
- > Side walls with Euro perforation 10 x 38 mm
- > Added safety due to heel protection and edge protection
- > Central locking with cylinder lock
- > Wide drawers (W 640 x D 400 mm) fully extendable, removable
- > Load capacity per drawer 40 kg, lower heavy-duty drawer 60 kg
- > Total load capacity 1000 kg static (750 kg dynamic)

Special edition in anthracite



6 drawers with 40 kg load capacity and one heavy-duty drawer with 60 kg load capacity

GEDORE axle design ensures smooth running, maneuverability, and tracking stability even at maximum load



Code	No.	RAL	Length mm	Width mm	Height mm	Drawers	Max. load-bearing capacity kg	Number of drawers	Crosswise divider	Lengthwise divider	Weight kg
3544567	MAGIC 2005 0511-7016	anthracite grey, RAL 7016	865	605	1.020	5x Type 1, H. = 67 mm 1x Type 2, H. = 137 mm 1x Type 3, H. = 207 mm	1000	7	2	3	84

2005 0701

TOOL TROLLEY

- > ABS worktop with small part compartments
- > Side walls with Euro perforation 10 x 38 mm
- > Added safety due to heel protection and edge protection
- > Central locking with cylinder lock
- > Wide drawers (W 640 x D 400 mm) fully extendable, removable
- > Load capacity per drawer 40 kg, lower heavy-duty drawer 60 kg
- > Total load capacity 1000 kg static (750 kg dynamic)



Code	No.	RAL	Length mm	Width mm	Height mm	Drawers	Max. load-bearing capacity kg	Number of drawers	Crosswise divider	Lengthwise divider	Weight kg
2003554	2005 0701	GEDORE blue, RAL 5017	865	605	1.020	7x Type 1, H = 67 mm 1x Type 3, H = 207 mm	1000	8	2	3	87



2005-TS-147

TOOL TROLLEY WITH TOOL ASSORTMENT

147 pieces

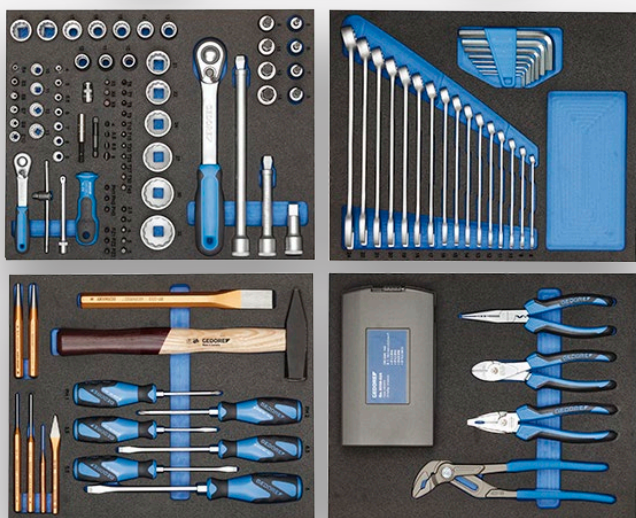
- > Tools in metric dimensions for industry, trade, automotive
- > In Check-Tool-Modules

Code	No.	Length mm	Width mm	Height mm	Drawers
2980282	2005-TS-147	865	605	1.020	5x Type 1, H = 67 mm 1x Type 2, H = 137 mm 1x Type 3, H = 207 mm

Number of drawers	Weight kg
7	104,3

Contents

1/4" Reversible ratchet No. 2093 U-20, 1/4" Wobble extension No. 2090 KR-4
 1/4" T-handle No. 2087, 1/4" Socket UD-profile No. D 20 4 5 5.5 6 7 8 9 10 11 12 13
 1/4" Socket No. TX 20 E4 E5 E6 E7 E8 E10
 1/4" Screwdriver bit slotted No. 680 4 5.5 6 5 8
 1/4" Screwdriver bit in-hex No. 685 2.5 3 4 5 6
 1/4" Screwdriver bit XZN No. 685 X 5 6 8, 1/4" Screwdriver bit PH No. 690 1 2 3
 1/4" Screwdriver bit PZ No. 690 PZD 1 2 3
 1/4" Screwdriver bit TX No. 687 TX T6 T7 T8 T9 T10 T15 T20 T25 T27 T30 T40
 1/4" Multi handle No. 676, 1/4" Bit holder No. 699, 1/2" Reversible ratchet No. 1993 U-20
 1/2" Extension No. 1990-2.1/2, 1/2" Cardan extension No. 1990 KR-5 -10
 1/2" Socket insert No. D 19 10 11 12 13 14 15 16 17 18 19 21 22 24 27 30 32
 1/2" Screwdriver socket in-hex No. IN 19 5 6 7 8 9 10 12 14
 Insert holder 1/4" hexagon - 1/4" square No. 673 6.3
 Bit-Adapter 1/4" hexagon - 1/4" square No. 620
 Combination spanner UD-profile No. 7 8 9 10 11 12 13 14 15 16 17 18 19 20 21 22 24
 Allen Key set No. PH 42-88 (2-10 mm), 3C-Screwdriver slotted No. 2154SK 3.5 5.5 6.5 8
 3C-Screwdriver PH No. 2160SK PH 1 2, Universal pliers No. 142 10 TL
 Power combination pliers No. 8250-180 JC, Multiple pliers No. 8133-200 JC
 Power side cutters No. 8316-180 JC, Engineer's hammer No. 4 E-500, Centre punch No. 100-12
 Pin punch No. 119-1,5 -3 -4, Flat chisel No. 97-250, Cross-cut chisel No. 98-125
 Drift punch No. 99 12-5, Twist drill set No. 8550-024



Code	No.	Pieces	Weight kg
2955997	TS-147	147	12,07



2005-TS-190

TOOL TROLLEY WITH TOOL ASSORTMENT

190 pieces

- > Tools in metric dimensions for industry, trade, automotive
- > In Check-Tool-Modules



Code	No.	Length mm	Width mm	Height mm		
2980290	2005-TS-190	865	605	1.020		
Drawers		Number of drawers		Pieces	Weight kg	
5x Type 1, H = 67 mm		7		190	109,6	
1x Type 2, H = 137 mm						
1x Type 3, H = 207 mm						

Contents

- 1/4" Reversible ratchet No. 2093 U-20
- 1/4" Wobble extension No. 2090 KR-4
- 1/4" T-handle No. 2087
- 1/4" Socket UD-profile No. D 20 4 5 5.5 6 7 8 9 10 11 12 13
- 1/4" Socket No. TX 20 E4 E5 E6 E7 E8 E10
- 1/4" Screwdriver bit slotted No. 680 4 5.5 6 5 8
- 1/4" Screwdriver bit in-hex No. 685 2.5 3 4 5 6
- 1/4" Screwdriver bit XZN No. 685 X 5 6 8
- 1/4" Screwdriver bit PH No. 690 1 2 3
- 1/4" Screwdriver bit PZ No. 690 PZD 1 2 3
- 1/4" Screwdriver bit TX No. 687 TX T6 T7 T8 T9 T10 T15 T20 T25 T27 T30 T40
- 1/4" Multi handle No. 676
- 1/4" Bit holder No. 699
- 1/2" Reversible ratchet No. 1993 U-20
- 1/2" Extension No. 1990-2.1/2
- 1/2" Wobble extension No. 1990 KR-5 -10
- 1/2" Socket No. D 19 10 11 12 13 14 15 16 17 18 19 21 22 24 27 30 32
- 1/2" Screwdriver socket in-hex No. IN 19 5 6 7 8 9 10 12 14
- 1/2" Screwdriver socket XZN No. INX 19 6 8 10 12
- 1/2" Screwdriver socket in-hex No. IN 19 L
- 5-90 6-90 8-90 10-140 12-140 14-140, long
- 1/2" Screwdriver socket TX No. ITX 19 T20 T25 T27 T30 T40 T45 T50 T55 T60
- 1/2" Screwdriver socket TX No. ITX 19 L T20-100 T25-100 T27-100 T30-100 T40-100 T45-100 T50-100 T55-100 T60-100, long
- Insert holder 1/4" hexagon - 1/4" square No. 673 6.3
- Bit-Adapter 1/4" hexagon - 1/4" square No. 620
- Combination spanner UD-profile No. 7 8 9 10 11 12 13 14 15 16 17 18 19 20 21 22 24
- Double open-end spanner No. 6 6x7 8x9 10x11 12x13 14x15 16x17 18x19 20x22 24x27
- Allen key set No. PH 42-88 (2-10 mm)
- 3C Screwdriver slotted No. 2154SK 3.5 5.5 6.5 8
- 3C Screwdriver PH No. 2160SK PH 1 2
- Universal pliers No. 142 10TL
- Power combination pliers No. 8250-180 JC
- Multiple pliers No. 8133-200 JC
- Power side cutters No. 8316-180 JC
- Circlip pliers for external retaining rings No. 8000 A 1 A 2 A 21
- Circlip pliers for internal retaining rings No. 8000 J 1 J 2 J 21
- Engineer's hammer No. 4 E-500
- Centre punch No. 100-12
- Pin punch No. 119-1.5 -3 -4
- Flat chisel No. 97-250
- Cross-cut chisel No. 98-125
- Drift punch No. 99 12-5
- Twist drill set No. 8550-024

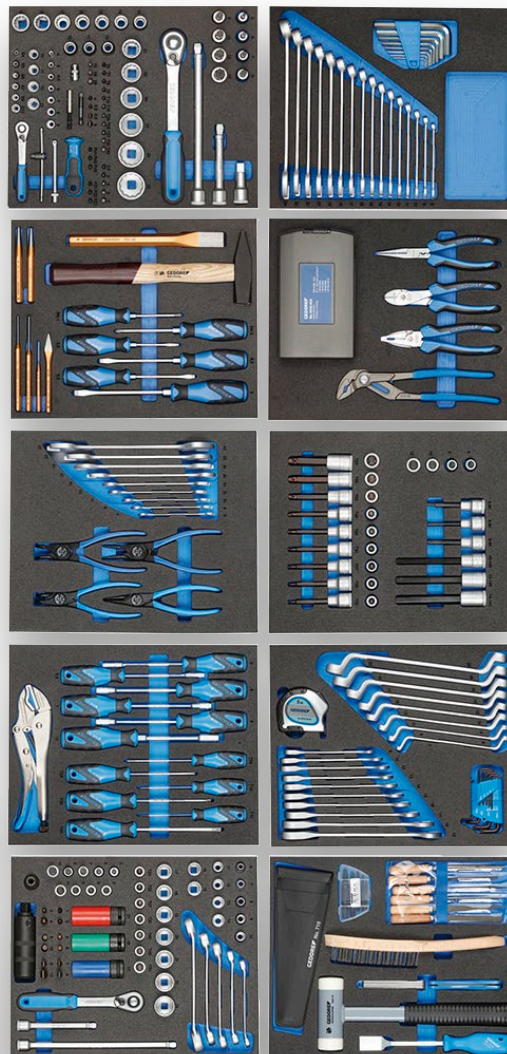


2005-TS-308

TOOL TROLLEY WITH TOOL ASSORTMENT

308 pieces

- › Tools in metric dimensions for industry, trade, automotive
- › In Check-Tool-Modules



Code	No.	Length mm	Width mm	Height mm	Drawers	Number of drawers	Weight kg
2980304	2005-TS-308	865	605	1.020	5x Type 1, H = 67 mm 1x Type 2, H = 137 mm 1x Type 3, H = 207 mm	7	175,8

Contents

1/4" Reversible ratchet No. 2093 U-20, 1/4" Wobble extension No. 2090 KR-4, 1/4" T-handle No. 2087, 1/4" Socket UD-profile No. D 20 4 5 5.5 6 7 8 9 10 11 12 13
 1/4" Socket insert No. TX 20 E4 E5 E6 E7 E8 E10, 1/4" Screwdriver bit slotted No. 680 4 5 5.5 6 5 8, 1/4" Screwdriver bit in-hex No. 685 2.5 3 4 5 6
 1/4" Screwdriver bit XZN No. 685 X 5 6 8, 1/4" Screwdriver bit PH No. 690 1 2 3, 1/4" Screwdriver bit PZ No. 690 PZD 1 2 3
 1/4" Screwdriver bit TX No. 687 TX T6 T7 T8 T9 T10 T15 T20 T25 T27 T30 T40, 1/4" Multi handle No. 676, 1/4" Bit holder No. 699, 1/2" Reversible ratchet No. 1993 U-20, 1/2" Extension No. 1990-2.1/2
 1/2" Wobble extension No. 1990 KR-5 -10, 1/2" Socket No. D 19 10 11 12 13 14 15 16 17 18 19 21 22 24 27 30 32, 1/2" Screwdriver socket in-hex No. IN 19 5 6 7 8 9 10 12 14
 1/2" Screwdriver socket XZN No. INX 19 6 8 10 12, 1/2" Screwdriver socket in-hex No. IN 19 L 5-90 6-90 8-90 10-140 12-140 14-140, long
 1/2" Screwdriver socket TX No. ITX 19 T20 T25 T27 T30 T40 T45 T50 T55 T60, 1/2" Screwdriver socket TX No. ITX 19 L T20-100 T25-100 T27-100 T30-100 T40-100 T45-100 T50-100 T55-100 T60-100, long
 1/2" Impact socket bit with protective sleeve No. K 19 LS 17 19 21, 5/16" Screwdriver bit slotted No. 880 7 8 9 12 ST-40, 5/16" Screwdriver bit in-hex No. 885 5 6 8 10
 5/16" Screwdriver bit PH No. 890 1 2 3 4, 3/8" Reversible ratchet No. 3093 U-20, Recoiless hammer No. 248, 3/8" Wobble extension No. 3090 KR-5 -10
 3/8" Socket wrench UD-profile No. D 30 6 7 8 9 10 11 12 13 14 15 16 17 18 19 20 21 22 24, 3/8" Screwdriver socket in-hex No. IN 30 5 6 7 8 10, 3/8" Screwdriver socket XZN No. INX 30 5 6 8 10
 3/8" Screwdriver socket TX No. ITX 30 T20 T25 T27 T30 T40 T45 T50, Insert holder 1/4" hexagon - 1/4" square No. 673 6.3, Bit-Adapter 1/4" hexagon - 1/4" square No. 620
 Adaptor 5/16" hexagon - 1/2" square No. KB 819, Open-end spanner with ring ratchet UD-profile No. 7 R 8 10 12 13 14 15 16 17 18 19
 Combination spanner UD-profile No. 7 8 9 10 11 12 13 14 15 16 17 18 19 20 21 22 24, Double open-end spanner No. 6 6x7 8x9 10x11 12x13 14x15 16x17 18x19 20x22 24x27
 Double ring-end spanner UD-profile No. 2 6x7 8x9 10x11 12x13 14x15 16x17 18x19 20x22, Double flare end spanner hexagon No. 400 8x10 10x11 12x14 13x15 17x19, open
 Allen key set No. PH 42-88 (2-10 mm), Offset screwdriver set No. H 43 TX-09, 3C-Screwdriver slotted No. 2154SK 3.5 5.5 6.5 8
 3C-Screwdriver PH No. 2160SK PH 1 2, 3C-Screwdriver TX No. 2163 TX T10 T15 T20 T25 T30 T40, Socket wrench with 3C handle hexagon No. 2133 5.5 6 7 8 9 10, Universal pliers No. 142 10 TL
 Power combination pliers No. 8250-180 JC, Multiple pliers No. 8133-200 JC, Power side cutters No. 8316-180 JC, Circlip pliers for external retaining rings No. 8000 A 1 A 2 A 21
 Circlip pliers for internal retaining rings No. 8000 J 1 J 2 J 21, Engineer's hammer No. 4 E-500, Centre punch No. 100-12, Pin punch No. 119-1.5 -3 -4, Flat chisel No. 97-250
 Cross-cut chisel No. 98-125, Drift punch No. 99 12-5, Twist drill set No. 8550-024, Hacksaw No. 407, Grip pliers 10" No. 137 10, Steel tape measure, 5m No. 4534-5
 Screw remover 1/2" No. K 1900, Cable knife No. 0063-08, Wire brush No. 646, Pocket vernier caliper No. 710, Key file set No. 8728, Bolt extractor set No. 8551-55
 Gasket scraper No. 133 K, Feeler gauge set, fan pattern No. 702 20 M

Code	No.	Pieces	Weight kg
2956535	TS-308	308	30,14

2005 XL

WORKSHOP TROLLEY

- > Extra wide drawers with large storage capacity
- > Multifunctional, extra wide storage/mounting surface
- > 1,000 kg total load capacity (static); load capacity per drawer: 60 kg; lower heavy-duty drawer: 70 kg.
- > Full-extension drawers for easy access
- > Special GEDORE chassis for smooth running, manoeuvrability and directional stability under maximum load
- > Compatible with GEDORE tool sets (ES or CT modules) for different applications

7 extra-wide drawers

High total load capacity of 1000 kg



Multifunctional, extra-wide storage/assembly surface

Easy to maneuver



Code	No.	RAL	Length mm	Width mm	Height mm	Drawers	Max. load-bearing capacity kg	Number of drawers	Crosswise divider	Lengthwise divider	Weight kg
3437493	2005 XL 0520	GEDORE blue, RAL 5017	1.021	605	1.020	5xType1, H=71mm 2xType2, H=146mm	1000	7	2	3	105,5
3437485	2005 XL 0710	GEDORE blue, RAL 5017	1.021	605	1.020	7xType1, H=71mm 1xType2, H=146mm	1000	8	2	3	97

2005 XL-S-466

TOOL TROLLEY

WITH TOOL ASSORTMENT FOR CARS

466 pieces

- > Fully equipped tool trolley for fast, organised and efficient repair and maintenance work in everyday workshop life
- > Very robust and durable tools
- > Mobile workstation and tool storage combined
- > Full-extension drawers for easy access
- > Easy visual completeness check due to 2-colored foam inserts

**Full-extension drawers
for easy access**

**Mobile workstation
and tool storage
combined**

**Fully equipped
tool trolley with
466 pieces**



Code	No.	Length mm	Width mm	Height mm	Pieces	Weight kg
3458946	2005 XL-S-466	1.021	605	1.020	466	150,2

Contents

Extension No. 2090-2 -4 -6 -12, Universal joint No. 2095, Sliding T-bar 1/4" No. 2087, Ratchet with T-handle 1/4" No. 2093 U-3 T, Reversible ratchet 1/4" No. 2093 U-20, Socket 1/4" No. D 20 4 5 6 7 8 9 10 11 12 13 mm Socket 1/4", long No. 20 L 4 5 6 7 8 9 10 11 12 13 mm, Socket 1/4" No. TX 20 E4 E5 E6 E7 E8 E10, Screwdriver bit socket 1/4" No. IKS 20 PH1 PH2 PH3, Screwdriver bit socket 1/4" No. IS 20 5,5x1 6,5x1,2 Screwdriver bit socket 1/4" No. IN 20 3 4 5 6 8, Screwdriver bit socket 1/4" No. ITX 20 T10 T15 T20 T25 T27 T30 T40, Socket 1/4" No. KL-4043-1106 -1107 -1108 -1110 -1111 -1112, Socket wrench 1/4" No. KL-4043-1010 -1015-1025 -1030 Socket wrench 1/4" No. KL-4043-1020, Extension 3/8" No. 3090-5 -10 -12, Extension 3/8" with magnet No. 3090 M, Universal joint 3/8" No. 3095, Adaptor 3/8" to 1/2" No. 3019, Reducer 3/8" to 1/4" No. 3020 Reversible ratchet 3/8" No. 3093 U-20, Swivel head reversible ratchet 3/8" No. 3093 GU-3, Socket 3/8" No. 30 6 7 8 9 10 11 12 13 14 15 16 17 18 19, Socket 3/8", long No. D 30 L 10 11 12 13 14 15 16 17 18 19 Socket 3/8" No. TX 30 E6 E7 E8 E10 E11 E12 E14, Screwdriver bit socket 3/8" No. IN 30 4 5 6 7 8 10, Screwdriver bit socket 3/8", long No. IN 30 4 5 6 7 8 10, Screwdriver bit socket 3/8" No. KL-4021-3107 A -3109 A -3111 A Screwdriver bit socket 3/8" No. ITX 30 T20 T25 T27 T30 T40 T45 T50, Screwdriver bit socket 3/8", long No. ITX 30 L T20 T25 T27 T30 T40 T45 T50, Screwdriver bit socket 3/8" XZN No. INX 30 5 6 8 10 Screwdriver bit socket 3/8", long XZN No. 6 8 10, Socket 3/8" No. KL-4043-2110 -2112 -2114 -2116 -2118 -2120, Socket wrench 3/8" No. KL-4043 IP40 IP45 IP50 IP55 IP60, Extension 1/2" No. 1990-5 -10 Extension 1/2" with magnet No. 1990 M, Universal joint 1/2" No. 1995, Reducer 1/2" to 3/8" No. 1930, Sliding T bar 1/2" No. 1987, Reversible ratchet 1/2" No. 1993 U-20, Telescopic reversible ratchet 1/2" No. 1993 TU-10 Socket 1/2" No. 8 9 10 11 12 13 14 15 16 17 18 19 20 21 22 23 24 26 27 28 30 32, Socket 1/2" No. D 19 L 10 12 13 14 15 16 17 18 19 21 22 24 27 30 23, Socket 1/2" No. TX 19 E10 E11 E12 E14 E16 E18 E20 E24 Screwdriver bit socket 1/2" No. IN 19 5 6 7 8 9 10 12 14 17, Screwdriver bit socket 1/2" TX No. ITX 19 T27 T30 T40 T45 T50 T55 T60, Screwdriver bit socket 1/2" XZN No. INX 19 5 6 8 10 12 14 16 Screwdriver bit socket 1/2", long No. IN 19 L 5-90 6-140 7-140 8-140 9-140 10-140 12-140 14-140, Screwdriver bit socket 1/2" No. ITX 19 L T27-100 T30-100 T40-100 T45-100 T50-100 T55-100 T60-100 Socket 1/2" No. KL-4043-3122 -3124 -3126 -3128 -3130 -3132, Impact socket 1/2" with protective sleeve No. K 19 LS 17 19 21 22, Impact socket 1/2", long No. K 19 L 13 14 16 17 18 19 21 22 23 24 27 Ratchet screwdriver SilentGEAR No. 2675, Insert holder short 1/4" No. 673 K, Bit-Box Industry 32 pieces No. 666-032-J, Bit-Adapter 1/4" hexagon - 1/4" square No. 620, Combination spanner No. 1 B 6 7 8 9 10 11 12 13 14 15 16 17 18 19 20 21 22 24 27 28 30 32, Combination ratchet spanner No. 7 R 8 9 10 11 12 13 14 15 16 17 18 19, Double ring-end spanner No. 2 6x7 8x9 10x11 12x13 14x15 16x17 18x19 22x24, Double ring-end spanner No. TX 4 E6xE8 E10xE12 E14xE18 E20xE24, Double flare end spanner, open No. 400 8x10 11x13 12x14 17x19, Half-moon ring spanner No. 304 11x13 14x16 15x17, Nut driver No. 2133 6 7 8 9 10, 3C-Screwdriver, short No. 2153 5,5, 3C-Screwdriver with striking cap No. 2154SK 4,5 5,5 6,5 8, 3C-Screwdriver with striking cap No. 2160SK PH1 PH2 PH3 PH4, 3C-Screwdriver, short No. 2161 PH1, 3C-Screwdriver No. 2163 TXB T10 T15 T20 T25 T27 T30 T40, 3C-Screwdriver ball end No. 2163 K 3 4 5 6 8 Allen key set 2-10 mm No. H 42 KEL-88, Hexagon socket key set TX T9-T40 No. H 43 TX-88, Voltage tester 6-48 Volt AC/DC No. 4612, Power combination pliers No. 8250-180 JC, Side cutter No. 8314-180 JC, Multiple pliers No. 8133-180 JC Telephone plier No. 8132 AB-160 JC, Universal pliers 10" No. 142 10 TL, Set of circlip pliers 4 pieces No. S 8000, Universal combination shears No. KL-4901-10, Cable knife No. 0063-08, Grip wrench No. 137 7-11 Steel tape measure No. 4534-5, Digital measuring caliper No. 711, Feeler Gauge No. 702 20 M, Magnetic lifter No. KL-0126-206, Torque wrench UK Torcoflex No. 3549-05 10-50 Nm, Torque wrench UK Torcoflex No. 3550-20 40-200 Nm Universal Brake caliper Hook No. KL-0114-550, Brake caliper file No. 8726, Brake caliper brush No. 643, Spark plug socket spanner with joint No. KL-0127-48, Spark plug insert with retaining spring No. 53 16 mm Spark plug insert with retaining spring No. 56 18 mm, Gasket scraper No. 133 K, Hand file No. 8701 2-10, half round file No. 8725 2-10, Round file No. 8722 2-10, Flat chisel No. 97-125 -150 -200, Cross cut chisel, flat oval No. 96-150 Drift punch No. 99 10-2 -3 -4, Centre punch No. 100-10, Pin punch No. 119 3 4 5 6, Engineer's hammer ROTBAND-PLUS No. 600 E-400 -1500, Recoilless hammer No. 248 H-30, Twist drill bit set No. R93500025 01-13 Prybar No. 141-300 -390, Special grip wrench No. 139, Bottle opener 2C GEDORE No. GMH990007



KL-4999-420

WORKSHOP TROLLEY

with commercial vehicle hand tool assortment, 302 pieces

- > Extensive range of commercial vehicle/agricultural machinery trolley with tools for professionals
- > Tools in metric design
- > Broad drawers with full-extension runners
- > Drawer fitting in full-surface check tool inserts
- > Central locking with cylinder clock
- > Safety locking per drawer, one-hand operation
- > Total load capacity 1000 kg, 750 kg when mobile
- > Load capacity per drawer 70 kg



Code	No.	Length mm	Width mm	Height mm	Drawers	Max. load-bearing capacity kg	Number of drawers	Weight kg
3418367	KL-4999-420	1.200	635	985	full extension	1000	6	220

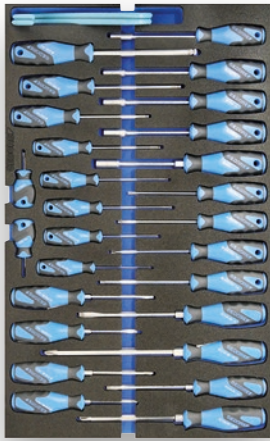
Contents

1/4" assortment (a/f 4-13, IN 4-8, and T8-T25), 1/2" assortment (a/f 10-32, T20-T60 long, IN 6-19 and IN long 6-14, impact screwdriver sockets a/f 17-32, and telescopic ratchet)
 3/4" assortment (a/f 21-60, E24, and IN long a/f 14, and impact screwdriver inserts a/f 24-41), Bit set and ratchet screwdrivers, Screwdriver sets (slot 4.5-8, PH 1-4, T10-T40, and IN 2-10)
 Spanner sets (a/f 6-41 + brake line and starter block spanners), Impact spanner sets (E18/E20/E24, hexagon a/f 24/26/27, and hexagon a/f 19/21/24)
 Extensive range of pliers, Extensive range of impact and hand lever tools, Extensive range of measuring, cutting, and machining tools

KL-4998-400

WORKSHOP TROLLEY WITH HAND TOOL FOR PASSENGER CARS

- › Fully equipped workshop trolley for repair and maintenance work on cars
- › Very robust and durable tools
- › Mobile workstation and tool storage combined
- › Full-extension drawers for easy access
- › Easy visual completeness check due to 2-colored foam inserts



Code	No.	RAL	Length mm	Width mm	Height mm	Drawers
3421147	KL-4998-400	blue	865	605	1.020	full extension
Max. load-bearing capacity kg	Number of drawers	Pieces	Weight kg			
1000	9	466	110			

Contents

Drawer 1

1/4" assortment (double hex 4-13mm; hex long 4-13mm; TX T10-T40; TX E4-E10; TX PLUS IP10-IP30; TX PLUS EP6-EP12; IN 3-8; cross-head PH1-PH3; slotted 5.5-6.5mm)

Bit box (32 pcs), Extensive pliers assortment

Hexagon L key kit (TX T9-40; IN 2-10)

Grip wrench brake line (11mm), Steel measuring tape (5m), Magnetic lifter

Drawer 2

3/8" assortment (hex 6-19mm; double hex long 10-19mm; TX T20-T50; TX E6-E14;

IN 4-11; XZN M5-M10; TX PLUS IP40-IP60; TX PLUS EP10-EP20;

spark plug socket spanner 14 + 16 + 18mm), Voltage tester (6-48 Volt AC/DC)

Torque wrench (3/8", 10-50Nm), Digital caliper gauge, Feeler gauge

Drawer 3

1/2" assortment (hex 8-32mm; TX T27-T60; TX E10-E24; IN 5-17;

XZN M5-M16; TX PLUS EP22-EP32), Torque wrench (1/4", 40-200Nm)

Drawer 4

Screwdriver assortment (hex 6-10mm; IN3-8; cross-head PH1-PH4;

slotted 4,5-8 mm; TX T10-T40), Univ. brake caliper hook pair

Drawer 5

Extensive striking tool, file, drill assortment

(files, hammers, drills, pry bars, chisels, punches)

Drawer 6

Special grip plier, Brake caliper brush

Combination spanner (6-32mm)

Drawer 7

Open-end spanner with ring ratchet (8-19mm), Double ring spanner (6-24mm, TX E6-E24)

Starter block spanner (11-17mm), Double ring spanner open (8-19mm)

Drawer 8

1/2" socket spanners (hex long 10-32mm; IN 6-14; TX T27-T60)

Power socket spanners with protective sleeve (17-22mm)

Power socket spanners (13-27mm), Cable stripping knife and Universal combination shears

1500 H 40

PAPER ROLL HOLDER

- > For paper rolls up to diameter 320 mm and width 350 mm
- > Perforation on the side for additional hooks (not included)
- > Colour RAL 9005 black
- > Suitable for all tool trolleys/benches with Euro holes 10 x 38 mm



Code	No.	Length mm	Width mm	Height mm	Weight kg
2997754	1500 H 40	350	200	110	1,36

KL-4911-11X

MAGNETIC MAT

- > Ideal for safely storing and securing tools, screws or other parts during repair work on the vehicle
- > Even the heaviest objects are held securely and reliably thanks to the extremely strong magnets
- > The mat can simply be stored loose or attached to magnetic surfaces such as a workshop trolley or lifting platform
- > The textured plastic surface with internal foam membrane prevents damage to sensitive surfaces, is easy to clean and is resistant to water and oil



Code	No.	Length mm	Width mm	Height mm	Weight kg
3457168	KL-4911-111	114	114	7	0,1
3457176	KL-4911-112	280	200	7	0,4
3457184	KL-4911-113	305	50	7	0,13

KL-4911-102

CAN HOLDER, MAGNETIC

- > Ideal for easy storage of spray cans such as brake cleaner, silicone and grease sprays and much more during repair work on the vehicle
- > This can be easily attached to a magnetic surface such as a workshop trolley or lifting platform



Code	No.	Magnetic lifting force g	for max. Ø mm
3457125	KL-4911-102	3.000	70

Length mm	Width mm	Height mm	Weight kg
160	90	120	0,29

KL-4911-103

MAGNETIC TRAY

- > Ideal for safely storing screws or other small parts during repair work on the vehicle
- > It can simply be attached to a magnetic surface such as a workshop trolley or a lifting platform
- > It doesn't matter whether they are vertical or horizontal, the special shape and high edge ensure that they are always stored securely



Code	No.	Outer diameter	Magnetic lifting force g	Weight kg
3457133	KL-4911-103	150 mm	2.500	0,4

1504 0701

MOBILE WORKBENCH

- > 30 mm thick multiplex beech wood worktop, surface additionally protected by linseed oil varnish
- > Large usable storage space with shelf and door
- > Wide drawers (W 480 x D 400 mm) fully extendable, removable
- > Load capacity per drawer 40 kg, bottom heavy-duty drawer 60 kg
- > GEDORE high-performance running gear, total load capacity 1000 kg, in mobile operation 750 kg
- > The GEDORE trapezoidal axle construction secures smooth running, maneuverability and track-keeping also in case of maximum loads



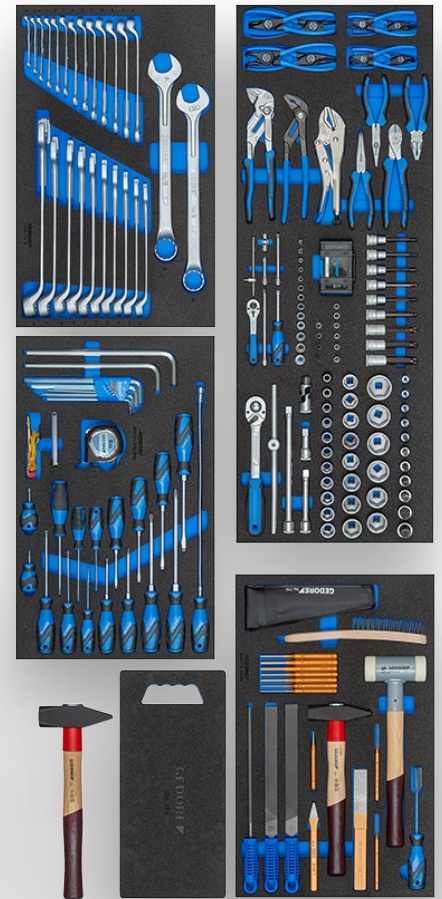
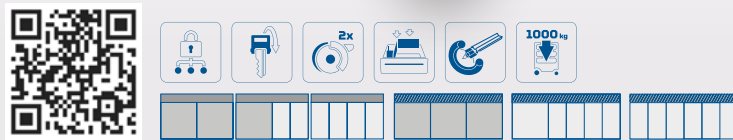
Code	No.	Length mm	Width mm	Height mm	Worktop thickness mm	Drawers	Number of drawers	Weight kg
1814931	1504 0701	1.100	630	985	30	7x Type 1, H = 67 mm 1x Type 3, H = 207 mm	8	105

1504 XL-S-198

WORKBENCH WITH AGRAR BASIC TOOL ASSORTMENT

198 pieces

- > Ideally suited for service and maintenance work on agricultural machinery
- > With GEDORE Check-Tool-System: completeness check by 2-coloured foam inserts
- > 30 mm thick multiplex laminated beech wood board, surface additionally protected by linseed oil varnish
- > Large storage space with lower shelf and door
- > 1 XL drawer (W 1055 x D 400 mm), 6 wide drawers (W 640 x D 400 mm) with full extension, removable



Code	No.	RAL	Length mm	Width mm	Height mm	Drawers	Max. load-bearing capacity kg	Number of drawers	Pieces	Weight kg
3434826	1504 XL-S-198	GEDORE blue, RAL 5017	1.250	630	985	1x Type XL, H. = 75 mm extra wide 4x Type 1b, H. = 67 mm, 1x Type 2b, H. = 137 mm 1x Type 3b, H. = 207 mm	1000	7	198	154,3

Contents
 Mobile workbench 1504 XL 1411 1.25 m wide, Screwdriver bit set 1/4" 620-024, Square handle 1/4" 2098, Socket 20 4 4.5 5 5.5 6 7 8 9 10 11 12 13 14 mm, Screwdriver bit 1/4" IN 20 4 5 6 8 mm, Screwdriver bit ITX 20 T8 T9 T10 T15 T20 T25, Reversible ratchet 1/4" 2093 U-10, T-handle 1/4" 2087, Extension 2090-2, Extension 2090-4, Extension 2090-6, Universal joint 2095, Socket 1/2" 19 10 11 12 13 14 15 16 17 18 19 20 21 22 23 24 25 26 27 28 29 30 32 33 34 36 mm, Screwdriver socket 1/2" IN 19 4 5 6 7 8 9 10 12 14 17 19, Screwdriver socket 1/2" ITX 19 L T20-100 T25-100 T27-100 T30-100 T40-100 T45-100 T50-100 T55-100 T60-100, Reversible ratchet 1/2" 1993 U-10 T, T-handle 1/2" 1987, Extension 1/2" 1990-3, Extension 1/2" 1990-5, Extension 1/2" 1990-10, Universal joint 1/2" 1995, Combination spanner 1 B 6 7 8 9 10 11 12 13 14 15 16 17 18 19 20 21 22 23 24 25 26 27 30 32 34 mm, Offset screwdriver set H 42 EL-88, Allen keys 42 EL 12 14, 3C-Screwdriver, short pattern 2153 5.5, 3C-Screwdriver with striking cap 2154SK 3.5 5.5 6.5 8, 3C-Screwdriver short pattern 2161 PH 2, 3C-Screwdriver with striking cap 2160SK PH 1 PH 2 PH 3 PH 4, 3C-Screwdriver 2163 TX T10 T15 T20 T25 T30 T40, Flat workshop file 10" 8701 2-10 | 250x25mm, Round workshop file 10" 8722 2-10 | 250x10 mm, Half-round workshop file 10" 8725 2-10 | 250x25 mm, Water pump pliers 10" 142 10 tsp, Gedore grip pliers 137 10, Combination pliers 8210-160 JC, Kraft side cutter 8316-200 JC, Multiple pliers 8133-180 JC, Needle nose pliers 8132 AB-200 JC, Assembly pliers set S 8008, 8 pcs, Pliers wrench 10" 183 10 JC, Locksmith's hammer ROTBAND-PLUS 600 H-600 S, Locksmith's hammer ROTBAND-PLUS 600 H-1500, Soft face hammer 248 H-50, Pin Punch 119-2 2 3 4 5 6 7 8 9 10mm, Grains 100-12, Slotted chisel 104, Cross chisel flat oval 96-175 | 175x17x11mm, Feeler gauge 702 13 M, Gasket scraper 133 K, Steel tape measure 4534-8 | 8m, Pocket vernier caliper 710, Car light test lamp 4610, Wire brush 644, Mounting lever 39, Solid foam kneeboard 906, Magnetic lifter 640-1800

1504 XL-S-306

WORKBENCH

WITH AGRAR PROFESSIONAL TOOL ASSORTMENT

306 pieces

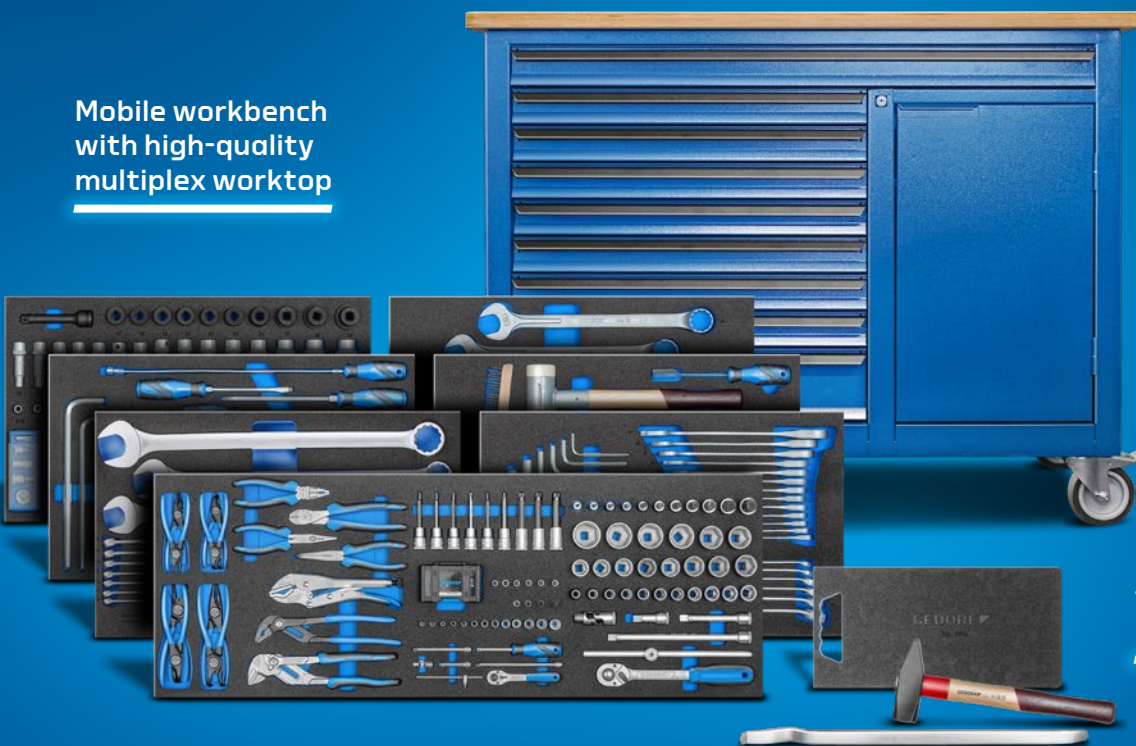
- > Ideally suited for service and maintenance work on agricultural machinery
- > With GEDORE Check-Tool-System: completeness check by 2-coloured foam inserts
- > 30 mm thick multiplex laminated beech wood board, surface additionally protected by linseed oil varnish
- > Large storage space with lower shelf and door
- > 1 XL drawer (W 1055 x D 400 mm), 6 wide drawers (W 640 x D 400 mm) with full extension, removable

Mobile workbench
with high-quality
multiplex worktop

Workbench
with high load
capacity

Comprehensive
equipment with
306 pieces

Powerful tools
for agricultural
machinery



Code	No.	RAL	Length mm	Width mm	Height mm	Drawers	Max. load-bearing capacity kg	Number of drawers	Pieces	Weight kg
3434834	1504 XL-S-306	GEDORE blue, RAL 5017	1.250	630	985	1x Type XL, H. = 75 mm extra wide 7x Type 1b, H. = 67 mm, 1x Type 2b, H. = 137 mm	1000	9	306	174,68

Contents

Rolling workbench extra wide 1504 XL 1710 | 1.25 m, Screwdriver bit set 1/4" 620-024, Square handle 1/4" 2098, Socket 20 4.5 5.5 6 7 8 9 10 11 12 13 14 mm
 Screwdriver bit 1/4" IN 20 4 5 6 8 mm, Screwdriver bit ITX 20 T8 T9 T10 T15 T20 T25, Reversible ratchet 1/4" 2093 U-10, T-handle 1/4" 2087, Extension 2090-2-4-6, Universal joint 2095
 Socket 1/2" 19 10 11 12 13 14 15 16 17 18 19 20 21 22 23 24 25 26 27 28 29 30 32 33 34 36 mm
 Socket 1/2" D 19 L 10 L 12 L 13 L 14 L 15 L 16 L 17 L 18 L 19 L 21 L 22 L 24 L 27 L 30 L 32 mm, Screwdriver bit 1/2" IN 19 4.5 6 7 8 9 10 12 14 17 19 mm
 Screwdriver bit 1/2" IN 19 L 6-140 7-140 8-140 9-140 10-140 12-140 14-140 mm, Screwdriver bit 1/2" ITX 19 L T20-100 T25-100 T27-100 T30-100 T40-100 T45-100 T50-100 T55-100 T60-100
 Socket 1/2" TX 19 E10 E11 E12 E14 E16 E18 E20 E24, Reversible ratchet 1/2" 1993 U-10 T, T-handle 1/2" 1987, Extension 1/2" 1990-3 -5 -10, Universal joint 1/2" 1995
 Impact socket 1/2" K 19 17 18 19 21 22 23 24 27 30 32, Impact extension 1/2" KB 1990-5, Adapter set S 2032-05, 5 pieces, Check tool inlay with assortment 2005 CT4-7 XL
 Combination spanner 1 B 6 7 8 9 10 11 12 13 14 15 16 17 18 19 20 21 22 23 24 25 26 27 30 32 34 mm, Open-end wrench with ring ratchet 7 R 10 11 12 13 14 15 16 17 18 19 21 22 24 mm
 Starter block wrench 304 13x15 14x17 19x22 mm, Double ended flare nut spanner 400 9x11 10x12 13x15 14x17 19x22 24x27, Allen Key set H 42 EL-88, Allen keys, long 42 EL 12 14
 Allen key set PH 42-88, 8 pieces, Allen keys 42 7 9 12 14 17 19 22 mm, 3C-Screwdriver, short pattern 2153 5.5, 3C-Screwdriver with striking cap 2154SK 3.5 5.5 6.5 8, 3C-Screwdriver short pattern 2161 PH 2
 3C-Screwdriver with striking cap 2160SK PH 1 PH 2 PH 3 PH 4, 3C-Screwdriver 2163 TX T10 T15 T20 T25 T30 T40, Nut drivers 2133 6 7 8 10 11 12 13 mm, Flat blunt workshop file 8701 2-10 | 10"
 Round workshop file 8722 2-10 | 10", Half-round workshop file 8725 2-10 | 10", Water pump pliers 142 10 TL | 10", GEDORE Grip pliers 137 10, Combination pliers 8210-160 JC
 Power side cutter 8316-200 JC, Multiple pliers 8133-180 JC, Needle nose pliers 8132 AB-200 JC, Assembly pliers set S 8008, 8 pieces, Pliers wrench 183 10 JC | 10"
 Locksmith's hammer ROTBAND-PLUS 600 H-600, Locksmith's hammer ROTBAND-PLUS 600 H-1500, Soft face hammer 248 H-50, Pin punch 119-2.2 3 4 5 6 7 8 9 10
 Grains 100-12, Slotted chisel 104, Cross chisel flat oval 96-175 | 175x17x11 mm, Feeler gauge 702 13 M, Gasket scraper 133 K
 Steel tape measure 4534-8 | 8m, Pocket vernier caliper 710, Car light test lamp 4610, Wire brush 644, Mounting lever 39, Solid 906 foam kneeboard, Magnetic lifter 640-1800



1506 XL 2810

MOBILE WORKBENCH EXTRA-WIDE

- > Sheet steel, corrosion and scratch-resistant, powder-coated, GEDORE blue
- > 30 mm thick multiplex laminated beech wood board, surface additionally protected by linseed oil varnish
- > Safety through heel protection for persons
- > Central locking with cylinder lock per drawer unit, keyed alike
- > Wide drawers (W 480 x D 400 mm) fully extendable, removable
- > Safety locking per drawer, one-hand operation
- > Guide rails with ball bearings
- > Load capacity per drawer 40 kg, bottom heavy-duty drawer 60 kg
- > Total load capacity 1000 kg, in mobile operation 750 kg
- > 2 GEDORE heavy-duty wheels with roller bearings (fixed castors, 200 mm)
- > 2 GEDORE easy-running wheels with ball bearings (swivel castors, 125 mm), both with total brake each
- > The GEDORE trapezoidal axle construction secures smooth running, manoeuvrability and track-keeping also in case of maximum loads



Code	No.	Length mm	Width mm	Height mm	Worktop thickness mm	Drawers	Number of drawers	Weight kg
2528096	1506 XL 2810	1.250	630	985	30	16x Type 1, H = 67 mm 2x Type 2, H = 137 mm	18	156

1507 XL 30101

MOBILE WORKBENCH EXTRA-WIDE DRAWERS

- > 30 mm thick multiplex laminated beech wood board, surface additionally protected by linseed oil varnish
- > Worktop offset to the rear allows flush parking against the wall
- > Manoeuvrable and easy to steer with drive/steer handle
- > Side walls with Euro perforation 10 x 38 mm for attaching hooks and tools
- > Ready to take up tool holder KL-5501-20 for installation of spring compressor KL-5501
- > Safety through heel protection for persons
- > Sheet steel, corrosion and scratch-resistant, powder-coated, GEDORE blue
- > Central locking with cylinder lock
- > Wide drawers (W 998 x D 474 mm) with full extension, removable
- > Single pull-out stop prevents more than one drawer from being opened, one-hand operation
- > Guide rails with ball bearings
- > Load capacity per drawer 70 kg
- > Total load capacity 1000 kg, in mobile operation 750 kg
- > 2 GEDORE heavy-duty wheels with roller bearings (fixed castors, 200 mm)
- > 2 GEDORE easy-running wheels with ball bearings (swivel castors, 125 mm), both with total brake each
- > Even under maximum loads, the GEDORE trapezoidal axle construction ensures: smooth running, maneuverability and directional stability
- > Ideal for equipping with GEDORE tool modules (1500 ES/1500 CT) maximum 9 pieces 1/3 modules possible per drawer



Code	No.	Length mm	Width mm	Height mm	Worktop thickness mm	Drawers	Number of drawers	Weight kg
3127826	1507 XL 30101	1.200	635	985	30	3x Type 1, H = 75 mm 1x Type 3, H = 155 mm 1x Type 5, H = 235 mm	5	127

1502

MOBILE WORKBENCH

- > Sheet steel, corrosion and scratch-resistant, powder-coated, GEDORE blue
- > 25 mm thick multiplex beech wood worktop, surface additionally protected by linseed oil varnish
- > Safety through heel protection for persons
- > Central locking with cylinder clock
- > 6 wide drawers (W 480 x D 400 mm) fully extendable, removable
- > Safety locking per drawer, one-hand operation
- > Guide rails with ball bearings
- > Can be individually equipped with longitudinal and transverse dividers (also available individually)
- > Load capacity per drawer 40 kg, bottom heavy-duty drawer 60 kg
- > Total load capacity 1000 kg, in mobile operation 750 kg
- > 2 GEDORE heavy-duty wheels with roller bearings (fixed castors, 200 mm)
- > 2 GEDORE easy-running wheels with ball bearings (swivel castors, 125 mm), both with total brake each
- > The GEDORE trapezoidal axle construction secures smooth running, manoeuvrability and track-keeping also in case of maximum loads



Code	No.	Length mm	Width mm	Height mm	Worktop thickness mm	Drawers	Number of drawers	Weight kg
6620540	1502	950	630	870	25	5x Type 1, H = 79 mm 1x Type 2, H = 180 mm	6	82



S 1500 ES-01 MODULE ASSORTMENT SMALL

104 pieces

- > General basic assortment for beginners of all professions
- > Tools in metric dimensions
- > Proven GEDORE ES tool modules in ABS plastic

Code	No.	Pieces	Weight kg
2319845	S 1500 ES-01	104	14,15

Contents

Combination spanner No. 1 B 6 7 8 9 10 11 12 13 14 15 16 17 18 19 20 21 22
 Allen keys No. 42 2 2.5 3 4 5 6 8 10
 Socket 1/2" hexagon UD-profile No. 19 10 11 12 13 14 15 16 17 18 19 21 22 23 24 26 27 28 30 32
 1/2" Screwdriver socket for in-hex No. IN 19 6 7 8 9 10 12 14
 1/2" Reversible ratchet No. 1993 U-20, 1/2" T-handle No. 1987
 1/2" Universal joint No. 1995
 1/2" Extension No. 1990-5 -10
 1/4" Socket No. 20 4 5 5.5 6 7 8 9 10 11 12 13 14
 1/4" Screwdriver socket for in-hex No. IN 20 3 4 5 6 8
 1/4" Socket wrench for external TX No. TX 20 E4 E5 E6 E7 E8 E10
 1/4" Screwdriver socket for internal TX No. ITX 20 T8 T9 T10 T15 T20 T25 T27 T30 T40
 1/4" T-handle No. 2087, 1/4" Extension No. 2090-4, 1/4" Universal joint No. 2095
 1/4" Driving handle No. 2098, 1/4" Reversible ratchet No. 2093 U-10
 3C-Screwdriver slotted No. 2150 4 5.5 6.5 8, 3C-Screwdriver PH No. 2160 PH 1 2
 Universal pliers No. 142 10 JC, Power combination pliers No. 8250-180 JC
 Flat nose pliers No. 8132-160 JC, Power side cutters No. 8316-160 JC
 Engineer's hammer No. 600 H-300, Flat chisel, octagonal No. 97-250
 Cross-cut chisel, octagonal No. 98-125, Drift punch, octagonal No. 99 12-5
 Centre punch, octagonal No. 100-12, Pin punch, octagonal No. 119-1,5 3 4

6,3 1/4" 12,5 1/2"

S 1500 ES-02 MODULE ASSORTMENT MIDDLE

207 pieces

- > Basic equipment for the commercial sector or ambitious do-it-yourselfers
- > Tools in metric dimensions
- > Proven GEDORE ES tool modules in ABS plastic
- > Also available in tool trolley No. 2004 0620



6,3 1/4" 12,5 1/2" 8 5/16"

Code	No.	Pieces	Weight kg
2319853	S 1500 ES-02	207	28,3

Contents

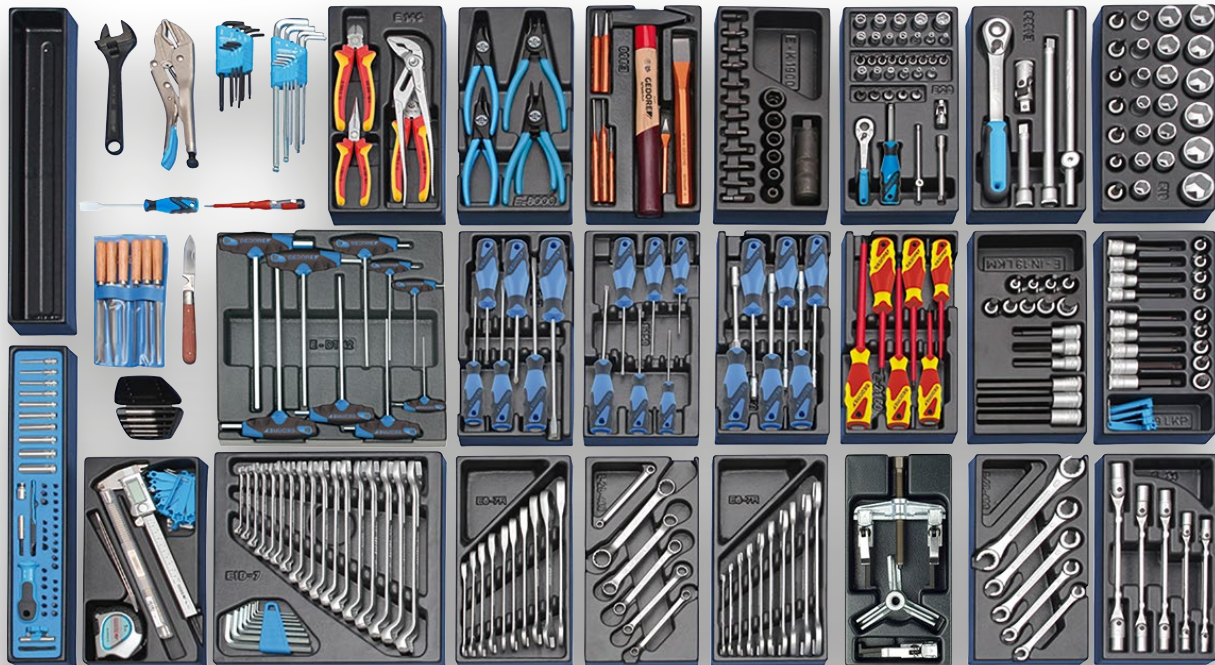
Combination spanner No. 1 B 6 7 8 9 10 11 12 13 14 15 16 17 18 19 20 21 22, Allen keys No. 42 2 2.5 3 4 5 6 8 10
 Double open-end spanner No. 6 6x7 8x9 10x11 12x13 14x15 16x17 18x19 20x22 21x23 24x27, 1/2" Socket No. 19 10 11 12 13 14 15 16 17 18 19 21 22 23 24 26 27 28 30 32
 1/2" Impact socket No. K 19 10 13 14 17 19, 1/2" Screwdriver socket slotted No. IS 19 10x1.6 12x2, 1/2" Screwdriver socket PH No. IKS 19 2 3 4
 1/2" Screwdriver socket XZN No. INX 19 8 10, 1/2" Screwdriver socket TX No. ITX 19 T20 T25 T27 T30 T40 T45 T50 T55 T60
 1/2" Screwdriver socket TX, long No. ITX 19 L T20-100 T25-100 T27-100 T30-100 T40-100 T45-100 T50-100 T55-100 T60-100, 1/2" Screwdriver socket No. IN 19 5 6 7 8 9 10 12 14 17
 1/2" Screwdriver socket, long No. IN 19 L 5-90 6-90 8-90 10-140 12-140 14-140, 1/2" Reversible ratchet 1993 U-20, 1/2" T-handle No. 1987, 1/2" Universal joint No. 1995
 1/2" Extension No. 1990-5 -10, 1/4" Socket No. 20 4 5 5.5 6 7 8 9 10 11 12 13 14, 1/4" Screwdriver socket for in-hex No. IN 20 3 4 5 6 8
 1/4" Socket wrench for external TX No. TX 20 E4 E5 E6 E7 E8 E10, 1/4" Screwdriver socket for internal TX No. ITX 20 T8 T9 T10 T15 T20 T25 T27 T30 T40
 1/4" T-handle No. 2087, 1/4" Extension No. 2090-4, 1/4" Universal joint No. 2095, 1/4" Driving handle No. 2098, 1/4" Reversible ratchet No. 2093 U-10
 5/16" Screwdriver bit slotted No. 880 7 8 9 12, 5/16" Screwdriver bit in-hex No. 885 5 6 8 10, 5/16" Screwdriver bit No. 890 1 2 3 4
 TX Gauge No. 708, Socket wrench with 2C-T-Handle No. 2133 5,5 6 7 8 9 10, Open-end spanner with ring ratchet No. 7 R 8 10 12 13 14 15 16 17 18 19
 3C-Screwdriver for slotted No. 2150 4 5.5 6.5 8, 3C-Screwdriver for No. 2160 PH 1 2, Adaptor 5/16" hexagon - 1/2" square No. KB 819
 Circlip pliers for external retaining rings No. 8000 A 1 A 2 A 21, Circlip pliers for internal retaining rings No. 8000 J 1 J 2 J 21, Universal pliers No. 142 10 JC
 Power combination pliers No. 8250-180 JC, Flat nose pliers No. 8132-160 JC, Power side cutters No. 8316-160 JC, Flat chisel, octagonal No. 97-250
 Cross-cut chisel, octagonal No. 98-125, Drift punch, octagonal No. 99 12-5, Centre punch, octagonal No. 100-12, Pin punch, octagonal No. 119-1.5 3 4
 Engineer's hammer No. 600 H-300, Thread file No. 140, Steel tape measure No. 4534-5, TX Gauge No. 708, Digital measuring caliper No. 711
 Tweezers No. 720, Scriber No. 745, 1/2" Screw remover No. K 1900, Distance module empty No. 1500 ED-70 K, 475x77x40 mm [6x]

S 1500 ES-03

MODULE ASSORTMENT LARGE

325 pieces

- > Extensive industrial range for professionals
- > Tools in metric dimensions
- > Proven GEDORE ES tool modules in ABS plastic
- > Also available in tool trolley No. 2004 0810



Code	No.	Pieces	Weight kg
2319861	S 1500 ES-03	325	38

Contents

Traverse 2-arm No. 106/103, Traverse 3-arm No. 107/103, Pressure spindle for puller No. 1.1406140, puller hook No. 106/S100-E
 Combination spanner with equal spanner sizes No. 1 B 6 7 8 9 10 11 12 13 14 15 16 17 18 19 20 21 22, Double-jointed spanner No. 34 8x9 10x11 12x13 14x15 16x17
 Double ring spanner No. 2 6x7 8x9 10x11 12x13 14x15 16x17 18x19 20x22, Double open-end spanner No. 6 6x7 8x9 10x11 12x13 14x15 16x17 18x19 20x22 21x23 24x27
 Double ring spanner No. 400 8x10 10x11 12x14 13x15 17x19, open, Open-end spanner with ring ratchet No. 7 R 8 10 12 13 14 15 16 17 18 19, Open-end spanner, adjustable No. 60 P 8 10"
 1/2" socket No. 19 10 11 12 13 14 15 16 17 18 19 21 22 23 24 26 27 28 30 32, 1/2" hexagon socket No. K 19 10 13 14 17 19, 1/2" Screwdriver bit, slotted No. IS 19 10x1.6 12x2, 1/2" Screwdriver bit PH No. IKS 19 2 3 4
 1/2" Screwdriver bit insert for internal multi-tooth screws XZN No. INX 19 8 10, 1/2" screwdriver bit for hexagon socket screws No. IN 19 5 6 7 8 9 10 12 14 17
 1/2" screwdriver bit for hexagon socket screws No. IN 19 L 5-90 6-90 8-90 10-140 12-140 14-140, long, 1/2" screwdriver bit XZN No. ITX 19 T20 T25 T27 T30 T40 T45 T50 T55 T60
 1/2" screwdriver bit XZN No. ITX 19 L T20-100 T25-100 T27-100 T30-100 T40-100 T45-100 T50-100 T55-100 T60-100, long, 1/2" reversible ratchet 1993 U-20
 1/2" cross handle No. 1987, 1/2" universal joint No. 1995, 1/2" extension No. 1990-5 -10, 1/4" socket No. 20 4 5 5.5 6 7 8 9 10 11 12 13 14
 1/4" screwdriver bit for hexagon socket screws No. IN 20 3 4 5 6 8, 1/4" socket for external TX screws No. TX 20 E4 E5 E6 E7 E8 E10
 1/4" screwdriver bit for internal TX screws No. ITX 20 T8 T9 T10 T15 T20 T25 T27 T30 T40, 1/4" cross handle No. 2087, 1/4" extension No. 2090-4
 1/4" universal joint No. 2095, 1/4" square socket No. 2098, 1/4" reversible ratchet No. 2093 U-10, 1/4" socket No. 20 L, SW 4 4.5 5 6 7 8 9 10 12 13 mm
 1/4" screwdriver bit No. 680, SW 4 5.5 6.5 8 mm, 1/4" screwdriver bit no. 685, SW 2.5 3 4 5 6 mm, 1/4" screwdriver bit no. 685 X 5 6 8 mm
 1/4" screwdriver bit No. 687 TX T6 T7 T8 T9 T10 T15 T20 T25 T27 T30 T40, 1/4" screwdriver bit No. 690 1 2 3, 1/4" screwdriver bit No. 690 PZD 1 2 3, 1/4" bit adapter No. 620
 5/16" screwdriver bit for slotted screws No. 880 7 8 9 12, 5/16" screwdriver bit for hexagon socket screws No. 885 5 6 8 10, 5/16" screwdriver bit for Phillips screws No. 890 1 2 3 4
 Connector 5/16" hexagon - 1/2" square No. KB 819, insert holder No. 673 6.3, bit holder No. 699
 Multi-handle No. 676, combination holding tool No. 639, socket spanner with 2CT-handle No. 2133 5.5 6 7 8 9 10, 3C screwdriver for slotted screws No. 2150 4 5 5.5 6.5 8
 3C screwdriver for Phillips screws No. 2160 PH 1 2, 3C screwdriver for internal TX screws No. 2163 TX T8 T10 T15 T20 T25 T30
 Hexagon socket screwdriver for hexagon socket screws No. 42 2.2.5 3 4 5 6 8 10, Hexagon socket screwdriver for hexagon socket screws No. 42 KEL 2.2.5 3 4 5 6 8 10 mm, extra long, with ball head
 Hex key L-wrenches for internal TX screws No. 43 KTX T10 T15 T20 T25 T27 T30 T40, with ball head, Hex key L-wrenches with 2CT-handle for hexagon socket screws No. DT 2142 2.2.5 3 4 5 6 7 8 10
 Assembly pliers for external circlips No. 8000 A 1 A 2 A 21, Assembly pliers for internal circlips No. 8000 J 1 J 2 J 21
 Grip pliers No. 137 10, universal pliers No. 142 10 C, power combination pliers No. VDE 8250-180 H, Round nose pliers with cutting edge No. VDE 8132-160 H
 VDE diagonal cutters with sheath insulation No. VDE 8314-160 H, Flat chisel, 8-sided No. 97-250, Cross chisel, 8-sided No. 98-125, Punch, 8-sided No. 99 12-5
 Centre punch, 8-sided No. 100-12, pin punch, 8-sided No. 119-1.5 3 4, locksmith's hammer No. 600 H-300
 Steel tape measure No. 4534-5, TX screw gauge No. 708, digital caliper No. 711, tweezers No. 720, scribe No. 745
 1/2" screwdriver No. K 1900, screw extractor No. 8551 M3-M6 M6-M8 M8-M11 M11-M14 M14-M18
 Voltage tester No. 4615 3, 220-250 V, 3mm, cable cutter No. 0513-09, 195 mm, gasket scraper No. 133 K
 TX screw gauge No. 708, thread file No. 140, flat, triangular, square, half-round, round file No. 8728
 Miniature LED light No. 649, empty spacer module No. 1500 ED-70 K, 475x77x40 mm [7x]

TC 666-MK-043

READY TO FIX KIT

43-piece

- > Bit/socket set with 5-in-1 multifunction bit ratchet
- > Multifunction bit ratchet with 180° swivel head and T-handle function
- > Bit screwdriver with strong holding magnet and high torque transmission
- > 50 mm torsion bits for deep-seated screws, impact-ready
- > Bit holder with strong holding magnet for use in chucks
- > 25 mm bits for universal screwdriving tasks
- > Storage in a premium textile pouch with CT module in 3D carbon look

Slim 5-in-1 multi-function bit ratchet with 180° swivel head and T-handle function

Bit screwdriver with strong holding magnet and high power transmission



Storage in a high-quality textile pouch



43-piece set for mobile use



Code	No.	Contents	Length mm	Width mm	Height mm	Pieces	Weight kg
3543889	TC 666-MK-043	1/4" Multi-function bit ratchet 671 M, Extension 671-M, 1/4" square adapter 671-MK Bit screwdriver 670M, D20 5.5, D20 6, D20 7, D20 8, D20 10, D20 12, D20 13 Bits, 25 mm: PH1, PH2, PH3, PZ1, PZ2, PZ3, T10, T15, T20, T25, T27, T30, T40 HEX2.5, HEX3, HEX4, HEX5, HEX6, HEX8, SL4.5, SL5.5 Torsion bits, 50 mm: PH2, PZ1, PZ2, T20, T25, T30, HEX3, HEX4, HEX5, HEX6 Bit holder 1/4" hex	180	110	50	43	0,662

TC 666-H-047

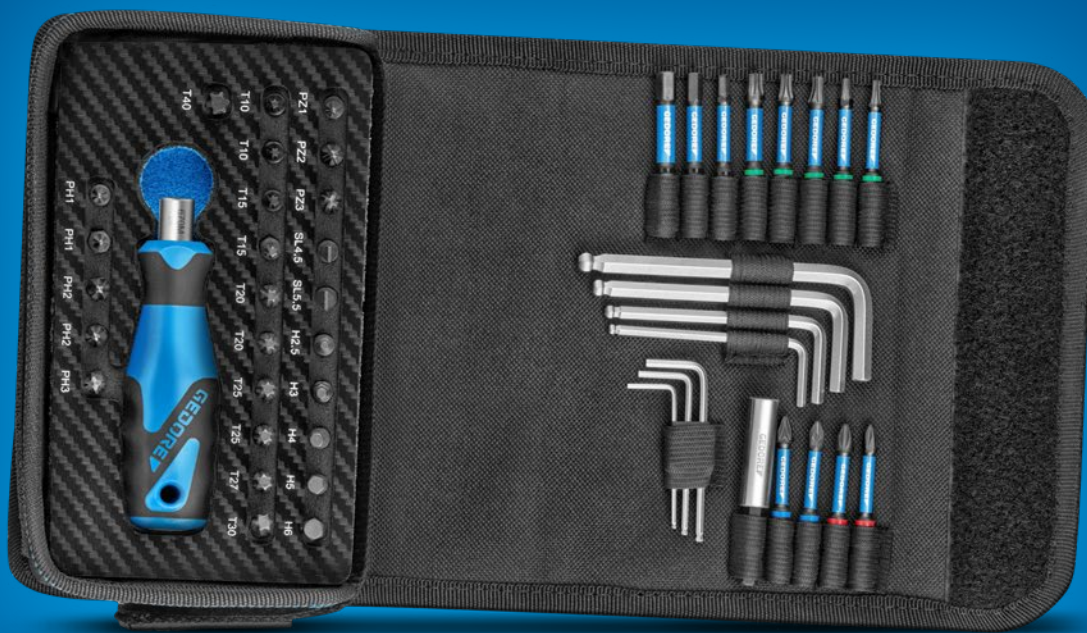
BIT-KIT

47-piece

- > Extensive torsion bit and screwdriver set
- > Selection of high-quality torsion bits in 25 mm and 50 mm – extra durable, extra resilient
- > 50 mm torsion bits for deep and hard-to-reach screw connections
- > 25 mm torsion bits, compact and agile for universal use
- > Bit screwdriver with strong holding magnet keeps the screw secure
- > HEX angle screwdriver set 1.5–6 mm with ball end for angled areas
- > Storage in a premium textile pouch with CT module in a 3D carbon look

Bit screwdriver with strong holding magnet keeps the screw secure

Selection of high-quality torsion bits in 25 mm and 50 mm - extra durable, extra long-lasting



Storage in a high-quality textile pouch



47-piece torsion bit and screwdriver set

Hex L-key wrenches with ball end for tight and deep fasteners



Code	No.	Contents	Length mm	Width mm	Height mm	Pieces	Weight kg
3543900	TC 666-H-047	Bit screwdriver 670M Torsion bits, 25mm: PH1, PH1, PH2, PH2, PH3, PZ1, PZ2, PZ3, T10, T10, T15, T15, T20, T20, T25, T25, T27, T30, T40 HEX2.5, HEX3, HEX4, HEX5, HEX6, SL4.5, SL5.5 Torsion bits, 50mm: PH1, PH2, PZ1, PZ2, T10, T15, T20, T25, T30, HEX4, HEX5, HEX6 Hex key wrenches HEX1.5, HEX2, HEX2.5, HEX3, HEX4, HEX5, HEX6, Bit holder 1/4" hex	180	110	50	47	0,6

TC 666-142-033

1/4" MAINTENANCE KIT

33-piece

- > User kit with tools for service and maintenance
- > Durable 7" water pump pliers with quick adjustment
- > 7UR ring ratcheting wrenches 10 + 13 mm, reversible and angled for tight areas
- > Adapter turns a 10 mm ratcheting wrench into a 1/4" ratchet
- > Multi-handle with removable bit holder
- > VDE screwdrivers SLIM DRIVE PH2 + SL 3.5 for work on electrical systems
- > The most important D20 double-hex sockets and bits
- > Storage in a premium pouch with 2K foam insert

33-piece user set with essential tools for service and maintenance

Adapter converts a 10 mm ratcheting wrench into a 1/4" ratchet

VDE SLIM DRIVE screwdrivers for work on electrical systems

High-quality 7" water pump pliers with quick adjustment, plus 10 mm and 13 mm ring ratcheting wrenches



Code	No.	Contents	Length mm	Width mm	Height mm	Pieces	Weight kg
3544540	TC 666-142-033	Water pump pliers 142-7, VDE 2160 PH 2, VDE 2172 3.5 Ratchet spanner 7 UR 10, 7 UR 13, 1/4" square adapter, Multi-handle 676 Bit holder 699, Bit adapter 620, Drive adapter 1/4" square x 1/4" hex 25mm D 20 5.5, 6, 7, 8, 10, 11, 12, 13 Bits, 25 mm: PH1, PH2, HEX 2.5, 3, 4, 5, 6 mm, T10, T15, T20, T25, T27, T30, T40 Torsion bits, 50 mm: T15, T20, T25	185	337	60	33	1,44



1041-002

PROFI-TOOL ASSORTMENT IN CASE

100 pieces

- › Professional set for all trades
- › Practical compilation for mobile use
- › Robust companion - whenever the right tools have always to be at hand



Code	No.	Length mm	Width mm	Height mm	Pieces	Weight kg
3082148	1041-002	490	395	185	100	12,906

Contents

Combination spanner No. 1 B, 8 10 13 17 19 22 mm, 1/2" Socket No. 19, 8 10 13 17 19 22 mm, 1/2" Extension No. 1990-5, 1/2" Reversible ratchet No. 1993 U-20
 Spring Socket rail for 14 inserts 1/2" VH 19, 1/4" Bit socket box No. 666-U-20, with ratchet 35 pcs, Allen Key set No. H 42-10, in holder 10 pcs
 Offset screwdriver set TX No. H 43 TX-88 in holder 8 pcs, Adjustable open-end wrench No. 60 P 8, 8", Percussion tool set No. 106, 6 pcs., Grip pliers No. 137 10, 10"
 Square awl No. 156 S, Non-return soft-face and engineer's hammer KOMBI-PLUS R No. 247 H-30, Hobby saw No. 406, Cable knife No. 0513-09, Spark plug brush No. 647
 Pocket caliper No. 710, 3C-Screwdriver slotted No. 2150, 3 4 5.5 6.5 8 mm, 3C-Screwdriver philips No. 2160, PH 0 1 2, 3C-Screwdriver pozi No. 2160, PZ 1 2
 Steel tape measure No. 4534-3, tape L. 3 m, Voltage detector slotted No. 4615 3, 220-250 V, 3mm, Small universal scissors No. 8096-140, Wire stripper No. 8098-160 JC, 160 mm 2C-handle
 Multiple pliers No. 8133-200 JC, 200 mm 2C-handle, Combination pliers 8245-180 JC, 180 mm 2C-handle, Power side cutter No. 8316-160 JC, 160 mm 2C-handle
 Universal pliers No. 142 10TL, 10" + Tool case No. WK 1041 L



1100-01

GEDORE L-BOXX® 136 WITH CRAFTSMAN ASSORTMENT

58 pieces

- > Especially suitable for the handyman or do-it-yourselfer
- > A practical assortment for on-site use
- > With Check-Tool insert for quick check of tool completeness
- > GEDORE L-BOXX® 136 with Easy Click connection system

Code	No.	Length mm	Width mm	Height mm	Pieces	Weight kg
2658194	1100-01	444	360	152	58	9,55

Contents

1/2" reversible ratchet No. 1993 U-20, 1/2" extension No. 1990-10, 250 mm
 1/2" universal joint No. 1995, 1/2" hex sockets No. 19, 10 11 12 13 14 15 16 17 18 19 21 22 24 mm
 Adjustable open-end wrench No. 60 CP 8, 8", Universal Pliers No. 142 10 JC, 10"
 2C handle power side cutter No. 8316-160 JC, 160 mm
 2C handle Multiple Pliers No. 8133-180 JC, 180 mm
 2C handle engineer's hammer No. 600 H-500, 500 g
 Bricklayer's chisel No. 110-256, 250x16 mm
 Control cabinet key UNIVERSAL No. 45 S, for control cabinets and locks
 Miniature LED light No. TFK 649, Hinged base No. E-649 F for LED light No. TFK 649
 Cable knife No. 0063-08, blade L. 80 mm
 Offset screwdriver set No. H 42-10, hexagon 1.3 1.5 2 2.5 3 4 5 6 8 10 mm
 Offset screwdriver No. SCL 43 TX-80, T9 T10 T15 T20 T25 T30 T40
 VDE Screwdriver set No. VDE 2170-2160 PH-077 Slot 2.5 4 5.5, cross recess PH 0 1 2
 Voltage Detector Slot No. 4615 3, 220-250 V, 3mm, Wooden folding rule No. 4533-2, 2 m
 Warding file set No. 8728, flat file, triangular, square, half-round, round file
 + GEDORE L-BOXX® 136 No. 1100 L



KL-0880-10 K VIDEOSCOPE

- > Extremely slim micro camera with Ø 3.9 mm
- > Dust- and water-proof lens with adjustable LED illumination
- > ±180° swivel angle via 2-way joint
- > Professional photo and video documentation with date and time stamp
- > Direct playback of photos and videos after capture



Code	No.	Display	Resolution	Swivel angle	Number of LEDs	Battery	Storage	Length mm	Width mm	Height mm	Weight kg
3444910	KL-0880-10 K	5,0"	1280 x 720 Pixel	+/- 180°	6	5.000 mAh	Hard case	350	260	70	1,2

KL-0880-20 INFRARED THERMOMETER

- > For quick, non-contact temperature measurement, even for hard-to-reach objects and liquids
- > Very high measuring accuracy thanks to adjustable emissivity detection
- > Red 12-point laser target detection (can be switched off)
- > Measured value hold function with min/max recording



Code	No.	Measuring range min.	Measuring range max.	Measuring accuracy %	Adjustable emission level	Length mm	Width mm	Height mm	Weight kg
3475840	KL-0880-20	-50 °C	+550 °C	1,5 %	0.1 to 1.0	95	45	145	0,1

KL-0880-11 K

VIDEOSCOPE

- > Extremely slim micro camera with Ø 3.9 mm
- > Dust- and water-proof lens with adjustable LED illumination
- > ±180° swivel angle via 4-way joint
- > Professional photo and video documentation with date and time stamp
- > Direct playback of photos and videos after capture

4-way articulation enables inspection in all directions

High battery capacity

Easy operation via joystick

1.2 m probe length allows extensive exhaust system inspection



Code	No.	Display	Resolution	Swivel angle	Number of LEDs	Battery	Storage	Length mm	Width mm	Height mm	Weight kg
3517381	KL-0880-11 K	5,0"	1280 x 720 Pixel	+/- 180° (4-way)	6	6.000 mAh	Hard case	415	325	140	1,5

905

ROLLER BOARD

- > Made of skin-friendly PP (polypropylene) - resistant to oils, greases and brake fluid
- > Fatigue-free working, with head/neck cushion for maximum comfort
- > Bucket moulding gives additional hold and allows maximum freedom of movement

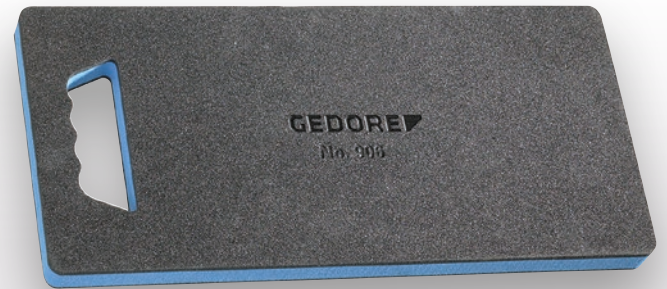


Code	No.	Length mm	Width mm	Height mm	Weight kg
1823698	905	1.000	480	120	5,5

906

KNEELING BOARD

- > Made of firm foam insert, blue/black
- > With recessed handle



Code	No.	Length mm	Width mm	Height mm	Weight kg
1942948	906	450	210	30	0,11

KL-0169-830

TIE ROD SPANNER SET

6 pieces

- > For easy loosening and adjustment of stuck push/track rods without damaging them
- > The unique two-part design completely encloses the mating surfaces on the tie rod
- > This ensures even force transmission and prevents slipping and expensive replacement of the entire tie rod
- > Conventional open-end spanners are usually too wide or expand under the high force required



Code	No.	for profile	Drive square inch	Version	Length mm
3462927	KL-0169-830	2-edge square hex	3/4"	divided	120

Contents	Pieces	Weight kg
1x KL-0169-8324 - Track Rod Socket, 24mm (waf)	6	2,9
1x KL-0169-8327 - Track Rod Socket, 27mm (waf)		
1x KL-0169-8330 - Track Rod Socket, 30mm (waf)		
1x KL-0169-8332 - Track Rod Socket, 32mm (waf)		
1x KL-0169-8334 - Track Rod Socket, 34mm (waf)		
1x KL-0169-8336 - Track Rod Socket, 36mm (waf)		

KL-0115-200

WHEEL HUB GRINDER

- > Universal use on wheel hubs with wheel studs on cars and vans
- > For quick cleaning of the rim contact surface
- > Solid corrosion residues can be removed easily
- > Patented quick-change holder for precise centring between the base body and the grinding disc



Code	No.	Drive square inch	Outer-Ø (1)
3463931	KL-0115-200	1/2"	50 mm
Outer-Ø (2)	Length mm	Weight kg	
40 mm	110	0,5	

600 E

ENGINEER'S HAMMER ROT BAND-PLUS - THE ORIGINAL

- > Engineer's hammer with proven ROTBAND-Plus safety technology
- > ROTBAND-Plus handle protection sleeve
- > Hammer head hot drop forged, DIN 1041
- > Double-curved, durable ash handle, DIN 5111



Code	No.	Head weight g	Stick length mm	Length mm	Weight kg
8581960	600 E-300	300	305	305	0,502
8582260	600 E-500	500	320	320	0,727
8582420	600 E-800	800	350	355	1,135
8582500	600 E-1000	1000	360	365	1,326

9 E-5

SLEDGE HAMMER

- > Forged hammer head DIN 1042
- > With ash handle DIN 5135



Code	No.	Head weight g	Length mm	Weight kg
8612270	9 E-5	5000	800	5,535

620 H

CLUB HAMMER ROTBAND-PLUS

- > Forged hammer head DIN 6475
- > Curved hickory handle (No. E 620 H) DIN 5135 with additional long, hardened steel handle protection sleeve
- > The sleeve, tapered collar, fixing plate and wood screw bond the hammer head and wood handle into one unit
- > ROTBAND-PLUS handle join, high working safety, long service life, best price-performance ratio



Code	No.	Head weight g	Total length mm	Weight kg
8887370	620 H-1000	1000	265	1,25
8887450	620 H-1250	1250	265	1,493
8887530	620 H-1500	1500	280	1,82
8887610	620 H-2000	2000	305	2,33



116 D PIN PUNCH SET

6 pieces

- > GEDORE vanadium steel
- > Striking heads inductively tempered
- > Working edge polished and clear varnished



Code	No.	Contents	Pieces	Weight kg
8758050	116 D	119-3-4-5-6-7-8	6	0,81

248 H RECOILLESS HAMMER

- > With hickory handle
- > Splinter-proof, shatter-proof and wear-resistant polyamide heads, 75 Shore D, tested to -20° C
- > Powder-coated with silver hammer-effect enamel



Code	No.	Ø	Length mm	Weight kg
8728220	248 H-25	25	310	0,3
8868230	248 H-30	30	330	0,45
8868310	248 H-35	35	340	0,59
8868580	248 H-40	40	360	0,72
8868660	248 H-45	45	365	0,87
8868740	248 H-50	50	370	1,06

119 L PIN PUNCH SET

6 pieces

- > GEDORE vanadium steel
- > Striking heads inductively tempered
- > Working edge polished and clear varnished



Code	No.	Contents	Pieces	Weight kg
8866290	119 L	119-175-4 175-5 175-6 175-7 175-8 175-10	6	0,58

113 D DRIFT PUNCH SET

6 pieces

- > GEDORE vanadium steel
- > Striking heads inductively tempered
- > Working edge polished and clear varnished



Code	No.	Contents	Pieces	Weight kg
8754060	113 D	99 10-1 2 3, 99 12-4 5 100-10	6	0,755

106 D TOOL SET

6 pieces

- > Striking heads inductively tempered
- > GEDORE vanadium steel
- > Working edge polished and clear varnished



Code	No.	Length mm	Width mm	Height mm	Pieces	Weight kg
8725710	106 D	175	112	26	6	0,82

Contents

97-125 150, 98-125, 99 12-3, 100-10, 119-4

104 HS SPLITTING CHISEL

flat

- > Carefully hardened and tempered along the full length
- > Striking heads inductively tempered
- > No. 104 HS with hand protection handle No. 108 UNI



Code	No.	Shank height mm	Blade width mm	Length mm	Weight kg
8723930	104 HS	7	26,0	220	0,45

120 WRECKING BAR

- > Made of special steel



Code	No.	Length mm	Hexagonal	Weight kg
8769410	120-500	500	18 mm	1,15
8769920	120-1000	1.000	18 mm	2,175



KL-0173-4620 K THREAD REFORMING TOOL SETS

20 pieces

- > Thread re-forming tool set for threads M3-M16
- > Infinitely adjustable base carrier
- > Thread is deformed back to its original geometry with absolutely no cutting by rolling
- > Strength of the thread is completely retained
- > In a practical plastic case with insert



Code	No.	Length mm	Width mm	Height mm	Pieces	Weight kg
3291375	KL-0173-4620 K	345	305	83	20	1,1

Contents

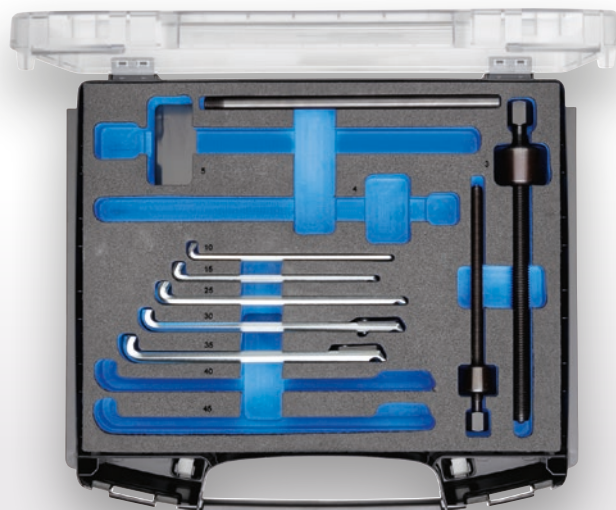
1x thread repair basic unit
 1x thread roller set P=0.8, 1x thread roller set P=1.0
 1x thread roller set P=1.25, 1x thread roller set P=1.5
 1x thread roller set P=1.75, 1x thread roller set P=2.0
 1x offset screwdriver 4 mm, 1x plastic case

1101-1.29/1K

BALL BEARING EXTRACTOR SET

in i-BOXX® 72

- > Ball bearing extractor set for more than 30 ball bearings
- > For removing ball bearings that are both on a shaft and in a housing
- > Non-destructive removal of deep-groove ball bearings without dismantling the shaft; no necessity to drill open the bearing cage (no chippings)
- > With Check-Tool insert for quick check of tool completeness
- > Insert can be used in drawers with minimum dimensions 340 x 260 x 60 mm



Code	No.	Use	Contents	Length mm	Width mm	Height mm	Weight kg
2963485	1101-1.29/1K	for ball bearings No. 6000 6001 6002 6003 6005 6006 6007 6008 6009 6010 6011 6012 6200 6201 6202 6203 6204 6205 6206 6207 6300 6301 6302 6303 6304 6305 6306 6307 6403 6404	129/104 Head, 129.106 Spindle SW 14, M10x1.5, 160 mm 129/304 Head, 129.306 Spindle SW 17, M14x2.0, 210 mm 129/10 Pull hook 1 pc. 140 mm (4x), 129/15 Pull hook 1 pc. 140 mm (4x) 129/25 Pull hook 1 pc. 170 mm (4x) 129/30 Pull hook 1 pc. 178 mm with 3 spacers (4x) 129/35 Pull hook 1 pc. 178 mm with 5 spacers (4x) 1.29/0 Plug-in handle, burnished, EI-1101 CT-1.29/3K Foam insert 1101 L GEDORE i-BOXX 72 empty	316	367	72	2,61

1101-1.29/3K

BALL BEARING EXTRACTOR SET

in i-BOXX® 72

- > Ball bearing extractor set for more than 40 ball bearings
- > For removing ball bearings that are both on a shaft and in a housing
- > Non-destructive removal of deep-groove ball bearings without dismantling the shaft; no necessity to drill open the bearing cage (no chippings)
- > With Check-Tool insert for quick check of tool completeness
- > Insert can be used in drawers with minimum dimensions 340 x 260 x 60 mm



Code	No.	Use	Contents	Length mm	Width mm	Height mm	Weight kg
2964392	1101-1.29/3K	6000 6001 6002 6003 6004 6005 6006 6007 6008 6009 6010 6011 6012 6200 6201 6202 6203 6204 6205 6206 6207 6208 6209 6210 6211 6212 6213 6300 6301 6302 6303 6304 6305 6306 6307 6308 6309 6310 6311 6403 6404 6405 6406 6407	129/104 head, 129.106 spindle a/f 14 mm, M10x1.5, 160 mm 129/304 head, 129.306 spindle a/f 17 mm, M14x2.0, 210 mm 129/404 head, 129.406 spindle a/f 19 mm, M18x2.5, 230 mm 129/504 head, 129.506 spindle a/f 22 mm, M20x2.5, 235 mm 129/10 puller leg 1 pc. 140 mm (4x) 129/15 puller leg 1 pc. 140 mm (4x) 129/25 puller leg 1 pc. 170 mm (4x) 129/30 puller leg 1 pc. 178 mm with 3 spacers (4x) 129/35 puller leg 1 pc. 178 mm with 5 spacers (4x) 129/40 puller leg 1 pc. 226 mm with 5 spacers (4x) 129/45 puller leg 1 pc. 226 mm with 11 spacers (4x) 1.29/0 burnished handle, EI-1101 CT-1.29/3K foam insert i-BOXX 72, empty 1101 L GEDORE i-BOXX 72 empty	316	367	72	5,78



1100-1.30

INTERNAL EXTRACTOR SET

in L-BOXX® 136, 8 pieces

- > For inner diameter 12 - 35 mm
- > For extremely-tightly-packed ball bearings, bearing races, bushings, and shaft seals Simmering®
- > With slide hammer and counter support
- > With Check-Tool insert for quick check of tool completeness



Code	No.	Contents
2836041	1100-1.30	Internal extractor No. 1.30/2.12-15 mm, Internal extractor No. 1.30/3.15-19 mm Internal extractor No. 1.30/4.19-25 mm, Internal extractor No. 1.30/4A, 25-30 mm Internal extractor No. 1.30/4S, 30-35 mm, Counter support No. 1.36/1 for 1.30/0 - 1.30/5 Sliding hammer No. 1.35/2, 500 mm, 1.7 kg + GEDORE L-BOXX® 136 No. 1100 L

Length mm	Width mm	Height mm	Pieces	Weight kg
444	360	152	8	8,28

1101-1.31/0-H

INTERNAL EXTRACTOR SET

With counter support & slide hammer in i-BOXX, 8-piece

- > Compact and handy set consisting of internal pullers, counter supports & slide hammer
- > Compact and handy i-BOXX ideal for both mobile and stationary use
- > Check-Tool inserts fits into the L-BOXX and tool trolleys/workbenches with minimum drawer dimensions 340 x 260 x 60 mm
- > Check-Tool inserts for quick missing tool check



Code	No.	Contents
3461734	1101-1.31/0-H	1.30/1 Internal extractor for Ø 8-12 mm, 1.30/2 Internal extractor for Ø 12-15 mm 1.30/3 Internal extractor for Ø 14-19 mm, 1.30/4 Internal extractor for Ø 19-25 mm 1.30/4A Internal extractor for Ø 24-30 mm, 1.36/1 Counterstay for 1.30/0 - 1.30/5 1.35/1A Slide hammer 700 g for 1.30/0 - 1.30/5, 1101 L GEDORE i-Boxx 72 small parts case EI-1101 CT-1.31/0-H Check-Tool module, empty

Length mm	Width mm	Height mm	Pieces	Weight kg
367	316	72	8	3,5



1100-1.04

UNIVERSAL PULLER SET

in L-BOXX® 136, 13 pieces

- > With 2- and 3-arm cross-beam
- > With rigid and slim legs and extensions
- > Extra slim Pulling hooks for narrow installation spaces are included for self-installation
- > 12 different pullers can be combined
- > Outside Ø up to 130 mm, inside Ø up to 170 mm with a clamping depth of 200 mm
- > With Check-Tool insert for quick check of tool completeness

Code	No.	Length mm	Width mm	Height mm	Pieces	Weight kg
2838362	1100-1.04	444	360	152	13	7,85

Contents

Universal puller HIGH POWER No. 1.04/HP1A-B, 2-arm, 130x100 mm
 Crossbeam No. 107/1A03, 3-arm 180 mm
 Pulling leg No. 106/A-100-B, all-steel, leg brake
 3x extension No. 106/A-100-VB with leg brake 100 mm
 3x pulling leg No. 106/A-100-S, slim 100 mm
 3x pulling leg No. 106/S101-S, without clamping part
 Spindle No. 1.1406200, 17 M14x1,5 200 mm + GEDORE L-BOXX® 136 No. 1100 L

1.04/ST

PULLER-SET

with stand, 3 pieces

- > Strong drop forged pattern
- > Due to the bending-moment reinforcement on its back face, the energy-saving design of the cross-beam means even stronger and safer pulling work
- > Adjustment scale for even adjustment of the puller hooks
- > The quick-action adjustment feature supports the energy-saving and fast operation
- > Exchangeable spindle tip (ball or tip)



Code	No.	Contents	Pieces	Weight kg
1675982	1.04/ST	1.04/1A Universal puller 2-arm 130x100 mm, 1.04/2A Universal puller 2-arm 200x150 mm 1.04/3A Universal puller 2-arm 350x200 mm, 1.04/97 Stand empty for 1.04-Series	3	15,2

1.04/HP2A-B

UNIVERSAL PULLER HIGH POWER

2-arm pattern, rigid legs with leg brake

- > Spreader beam specially hardened and tempered, load with double traction force possible
- > Puller legs forged from one piece, therefore more accurate fit, more stable, safer
- > With leg brake - prevents unintentional leg slipping. The leg can be slid along the cross-beam at the push of a button
- > Adjustment scale for even adjustment of the puller hooks



Code	No.	Clamping width (max.) external pulling mm	Clamping width (min.) internal pulling mm	Clamping width (max.) internal pulling mm	Usable clamping reach mm	Tractive force (max.) t	Spindle thread size	Width across flats mm	Width of hooked foot mm	Usable depth of hooked foot mm	Thickness of hooked foot at tip	Graduation	Weight kg
1981153	1.04/HP2A-B	200	110	260	150	10	G1/2x210mm	22	30	24	3,5	x	3,4

1.04/ST-HP-B

PULLER-SET

with stand, 3 pieces

- > Consisting of 3 pullers in different sizes
- > Spreader beam specially hardened and tempered, load with double traction force possible
- > Puller hook forged from one piece
- > With leg brake - prevents unintentional leg slipping. The leg can be slid along the cross-beam at the push of a button
- > Adjustment scale for even adjustment of the puller hooks
- > Can be retrofitted with hydraulic spindle



With hook brake - prevents unintended slipping of the hooks

Effortless pulling with reduced force required

Quick-adjust option

Increased safety and durability thanks to forged components

Code	No.	Contents	Pieces	Weight kg
2300044	1.04/ST-HP-B	1.04/HP1A-B Puller HIGH POWER 2-armed 130x100 mm 1.04/HP2A-B Puller HIGH POWER 2-armed 200x150 mm 1.04/HP3A-B Puller HIGH POWER 2-armed 350x200 mm 1.04/97 Stand empty for 1.04 series	3	14,48



1.81/K-12

THREAD ADAPTOR SET

for 1-hole uses, 11 pieces

- › The threaded inserts make the removal of threaded caps, possible, when these possess one threaded hole
- › For threads M4, M5, M6, M8, M10, M12, M14, M16, M18 including 700g slide hammer

Code	No.	Length mm	Width mm	Height mm	Weight kg
1936557	1.81/K-12	270	230	84	1,975

Contents

- 1.35/1A Sliding hammer 270 mm, 700 g
- 181/101 Threaded insert M10 / M4
- 181/102 Threaded insert M10 / M5
- 181/103 Threaded insert M10 / M6
- 181/104 Threaded insert M10 / M8
- 181/105 Threaded insert M10 / M10
- 181/106 Threaded insert M10 / M12
- 181/210 Threaded insert M14x1,5 / M14
- 181/211 Threaded insert M14x1,5 / M16
- 181/212 Threaded insert M14x1,5 / M18
- 135/125-II Adapter M10 - M14x1,5
- 181/1299 Plastic case with foam insert

1.07/2A1-B

UNIVERSAL PULLER

3-arm pattern, rigid legs with leg brake

- › Even load distribution over 3 legs ensures secure grip and balanced pull
- › Puller legs forged from one piece, therefore more accurate fit, more stable, safer
- › With leg brake - prevents unintentional leg slipping. The leg can be slid along the cross-beam at the push of a button
- › Can be used as external and internal puller by repositioning the legs
- › Interchangeable hooks available for several clamping depths



Code	No.	Clamping width (max.) external pulling mm	Clamping width (min.) internal pulling mm	Clamping width (max.) internal pulling mm	Usable clamping reach mm	Tractive force (max.) t	Spindle thread size	Width across flats mm	Width of hooked foot mm	Usable depth of hooked foot mm	Thickness of hooked foot at tip	Weight kg
1957988	1.07/2A1-B	200	100	260	150	5	G 1/2 x 210	22	30	24	3,5	3,96

1.07/K-2-SE

PULLER-SET

with 3 legs

- › Small handy set for 2&3 arm application in hard to reach places
- › Slim leg feet
- › The quick-action adjustment feature supports the energy-saving and fast operation



Code	No.	max. t	Pieces	Weight kg
1645455	1.07/K-2-SE	5,0	6	5,5

Contents

- 106/203 Cross-beam 2-arm 220 mm
- 107/203 Cross-beam 3-arm 220 mm
- 106/B-150-SE Pulling leg with quick release clamp 150 mm (3x)
- 1.2106210 Spindle 22, G 1/2", 210 mm
- 107/299-SE Plastic case with foam insert for 1.07/K-2-SE

1.85/1

PROFESSIONAL PLASTIC BEARING INSTALLATION SET

37 pieces

- › Using this bearing installation set more than 200 types of bearings may be re-installed effortlessly and without damage
- › The impact-resistant plastic is handily light, but just as robust as the metal variants
- › The impact rings are now secured on the pipe



Code	No.	Length mm	Width mm	Height mm	Pieces	Weight kg
1120778	1.85/1	360	450	140	37	5,2

Contents

- 33 impact rings, 10-50 mm for external Ø 26-110 mm
- 3 aluminum impact sleeves
- 1 recoil-free bodywork hammer with nylon heads (1.2 kg)

1.32/2

SET OF INTERNAL AND EXTERNAL EXTRACTORS

15 pieces

- › Sets with internal extractors, counter supports, puller chucks, external extractors and stud extractors
- › In robust sheet metal case



Code	No.	Pieces	Weight kg
8015340	1.32/2	15	17,8

Contents

- 1.30/2 Internal extractor 12–15 mm
- 1.30/3 Internal extractor 15–19 mm
- 1.30/4 Internal extractor 19–25 mm
- 1.30/4A Internal extractor 25–30 mm
- 1.30/5 Internal extractor 30–35 mm
- 1.30/6 Internal extractor 35–45 mm
- 1.30/7 Internal extractor 45–55 mm
- 1.30/8 Internal extractor 55–70 mm
- 1.36/1 Counterstay for 1.30/0 – 1.30/5
- 1.36/2 Counterstay for 1.30/6 – 1.30/7
- 1.19/OXS Puller, 3-arm, XS hooks 50x70 mm
- 1.12/02 Terminal clamp puller, 2-arm, 60x40 mm
- 1.06/1 Universal puller, 2-arm, 90x100 mm
- 1.06/2 Universal puller, 2-arm, 160x150 mm
- 1.28/1 Stud extractor 6–13 mm
- 132/299B Sheet metal box, empty

8133-180 JC

MULTIPLE PLIERS

with cutting edge, serrated, straight pattern

- > Multifunctional pliers for the mechanical and electronic fields
- > Holding, cutting, insulation-stripping, crimping, squeezing
- > Flat-round jaws, straight gripping faces, serrated
- > Induction-hardened precision cutting edges, hardness 62 - 64 HRC
- > For medium-hard wire 1.6 mm and soft wire up to Ø 6.0 mm
- > For crimping wire end ferrules (0.5 - 2.5 mm²)
- > For stripping cables from 0.5 to 2.5 mm²



Code	No.	Total length mm	Cutting values	Weight kg
6722110	8133-180 JC	180	Hard wire: 1,6 mm / 14 AWG, Medium hard wire: 3 mm / 9 AWG	0,17

8150

CRIMPMAX-360 PROFESSIONAL CRIMPING PLIERS

- > Lightweight, handy crimping pliers, easily operated with minimal hand force and used in hard-to-reach places
- > 360° crimping work area rotatable in 45° increments
- > For ferrules with and without insulating collar up to a length of 18 mm and a cross-section of 0.08 to 16.0 mm² and twin ferrules from 2x 0.25 to 2x 10.0 mm² in only one tool.
- > With automatic cross section adjustment
- > Unlockable ratchet for securing the complete crimping process
- > Manufactured with high precision and optimally adjusted at the factory, therefore no further adjustment of the crimp force is required



Code	No.	Capacity mm ²	AWG	Total length mm	Total width mm	Weight kg
3416437	8150	0,08-16	26-8	193	62	0,45

8151

CRIMPMAX-FLEX PROFESSIONAL CRIMPING PLIERS

- > Flexible tool system, consisting of basic tool and crimp die sets, which can be exchanged quickly and without the need tools
- > For crimping cables with conductor cross-sections up to 16 mm²
- > Ergonomic soft grips with slip guard
- > Positive lock secures the complete crimp
- > Includes insert 8151-1: for processing red 0.5 - 1.5 mm²/blue 1.5 - 2.5 mm²/yellow 4.0 - 6.0 mm² insulated contacts
- > Includes insert 8151-2: for processing ferrules with and without insulating collars (0.14 - 10 mm²)
- > Includes insert 8151-3: for processing non-insulated eyelets, pin cable lugs and connectors without insulation, as well as mini cable lugs (0.1 - 10 mm²)
- > Additional crimping inserts integrated into the handle



Code	No.	Capacity mm ²	AWG	Total length mm	Total width mm	Weight kg
3416445	8151	0,14-10 0,5-6 0,1-10	26-8 20-10 26-8	220	80	0,51

8245-180 JC

COMBINATION PLIERS

Euro pattern

- > Acc. to DIN ISO 5746
- > Universal model with slimline head, ideal for confined spaces
- > Induction-hardened precision cutting edges, hardness 62 - 64 HRC
- > For round and flat material
- > JC = chrome-plated, with 2-component handle covers



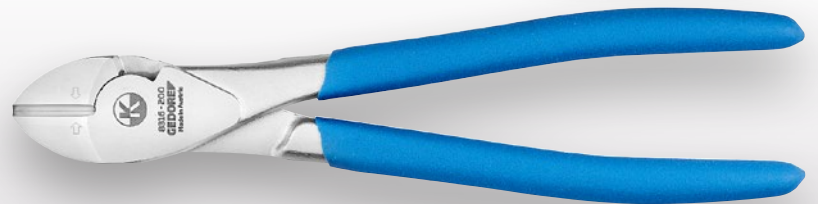
Code	No.	Length mm	Jaw length mm	Head width mm	Tip width mm	Head thickness mm	Cutting values	Weight kg
6733150	8245-180 JC	180	38	27,0	6,4	9,8	Hard wire: 2,2 mm / 11 AWG, Medium hard wire: 3,4 mm / 8 AWG Soft wire: 5 mm / 4 AWG, Cu cable, multi wire cross section: 16 mm ² Multi-wire cable Ø: 12 mm	0,26

8316

POWER SIDE CUTTER

American pattern

- > Acc. to DIN ISO 5749
- > Good lever action for easy cutting
- > Inductively hardened cutting edges (63 - 65 HRC) ensure constant cutting power over a long time span
- > Highest cutting performance with less effort due to the optimum interaction of cutting geometry, eccentric rivet bearing and ergonomic handle design
- > JC = chrome-plated, with 2-component handle covers
- > TC = chrome-plated, with blue dipped handles



Code	No.	Length mm	Jaw length mm	Jaw width mm	Head thickness mm	Weight kg
6744510	8316-160 JC	160	19	24,5	10,0	0,225
3463788	8316-200 TC	210	22	28,0	11,0	0,27

142

WATER PUMP PLIERS

- > Chrome-plated design increases rust protection and durability of the pliers
- > Induction hardening increases the longevity of the teeth
- > Dipped handle covers for comfortable handling and insulation at high and low temperatures
- > Slightly curved handle shape as well as increased contact surface on the hand for ergonomic working
- > Size on the workpiece adjusted with push button fine adjustment
- > Clamping protection reduces risk of injury
- > Automatic clamping with opposing grip serrated faces
- > Available in sizes from 7" to 16"



Code	No.	Length mm	Width mm	Height mm	Clamping reach mm	Weight kg
3462633	142 10 TC	250	7,5	48,0	38	0,34
3462722	142 12 TC	310	8,5	55,0	44	0,56

S 8303

PLIERS SET

3 pieces

- > Practical set composition
- > Consisting of universal pliers, power combination pliers and power diagonal cutters for various repairs and maintenance work
- > Chrome-plated surfaces ensure good protection against corrosion
- > Version JC = chrome-plated, with 2-component handles
- > Version TC = chrome-plated, with blue dipped handle covers



Code	No.	Pieces	Weight kg
3462781	S 8303 TC	3	0,88

Contents

Water pump pliers No. 142 10 TC, 10", 15-way adjustable, dip-insulated
 Power combination pliers No. 8250-180 TC, 180 mm, dip-insulated
 Power side cutter No. 8316-160 TC, 160 mm, dip-insulated

Code	No.	Pieces	Weight kg
6703160	S 8303 JC	3	1,005

Contents

Universal pliers No. 142 10 JC, 10", 15-way adjustable, 2-component handle
 Power combination pliers No. 8250-180 JC, 180 mm, 2-component handle
 Power side cutter No. 8316-160 JC, 160 mm, 2-component handle



8340 Z-200 TC BOLT CUTTERS

- > Compact power bolt cutter with a particularly effective cutting performance
- > Optimum lever action requires less effort
- > Wear-free rotating/thrust block bolt to reduce sliding friction when cutting
- > Double-sided milling with additional cutting edge, in the area close to the joint, guarantees best leverage for large wire diameters
- > TC = chrome-plated, with blue dipped handles



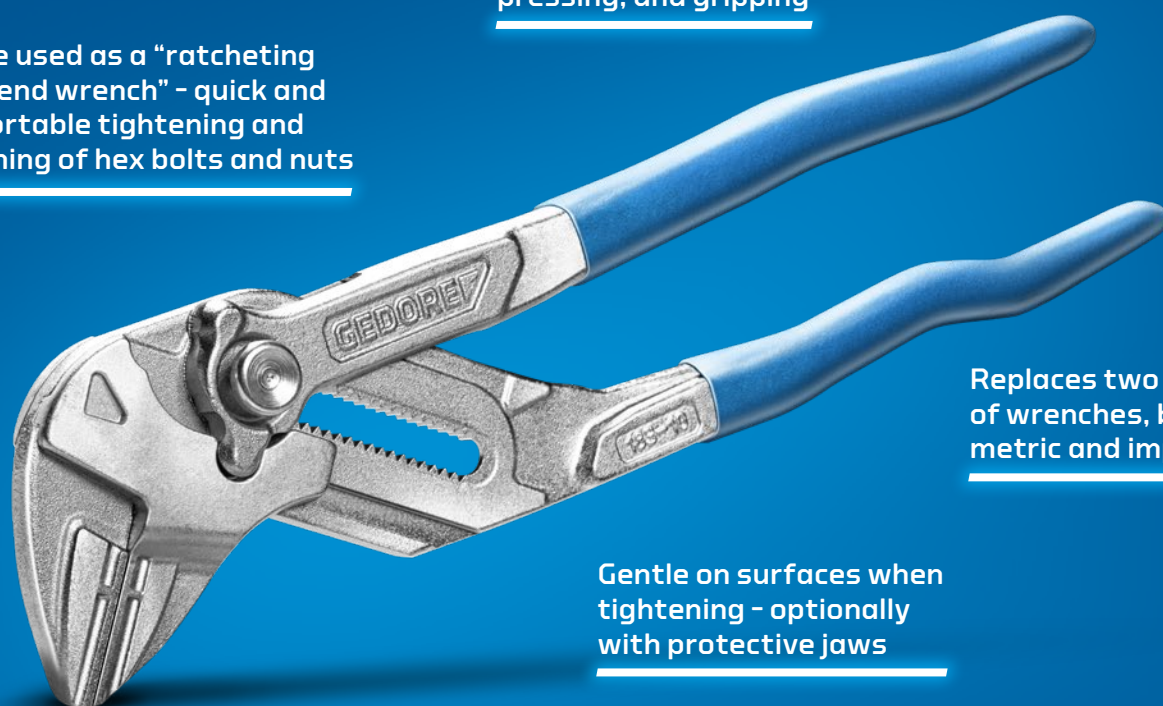
Code	No.	Total length mm	Cutting values	Weight kg
3464954	8340 Z-200 TC	210	Piano wire: 3,8 mm Hard wire: 5 mm / 4 AWG Medium hard wire: 6 mm / 3 AWG Soft wire: 6 mm / 3 AWG	0,36

PLIER WRENCH



Universal tool for holding, bending, pressing, and gripping

Can be used as a “ratcheting open-end wrench” - quick and comfortable tightening and loosening of hex bolts and nuts



Replaces two sets of wrenches, both metric and imperial

Gentle on surfaces when tightening - optionally with protective jaws

183

PLIER WRENCH

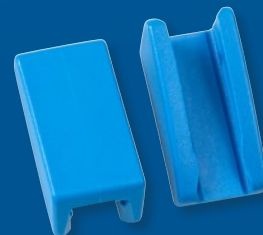
- > One tool that works like a spanner and pliers
- > Careful assembly of bolt connections with delicate surfaces (e.g. chrome-plated fittings)
- > Perfect for bending, holding, pressing and gripping a wide range of applications
- > Protection jaws available as an option
- > TC = chrome-plated, with blue dipped handles

E-183

SET OF PROTECTIVE JAWS

4 pieces

- > Optional protective jaws
- > For gentle assembly of surface-sensitive screw connections

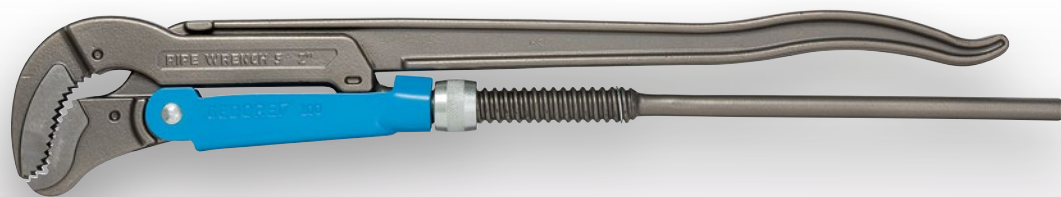


Code	No.	Size	Clamping reach mm	Length mm	Weight kg
3066029	183 7 TC	7	42	185	0,265
3066037	183 10 TC	10	52	260	0,545
3066045	183 12 TC	12	72	300	0,63

Code	No.	Pieces	Weight kg
3223779	E-183-10	4	0,04
3254305	E-183-7	4	0,013
3459039	E-183-12	4	0,018

ELBOW PIPE WRENCH ECK-SCHWEDE-SNAP® - THE SWEDISH

- > Acc. to DIN 5234 Form C
- > High-performance three-point pipe wrench
- > Particularly suitable for work in confined spaces
- > Drop-forged
- > Self-gripping by teeth offset against direction of rotation
- > Fully tempered, teeth additionally inductively hardened



Code	No.	Size	Pipe-Ø	Length mm	Weight kg
4500140	100 1	1	48	320	0,84
4500220	100 1.1/2	1.1/2	60	420	1,47
4500300	100 2	2	80	550	2,24

8000 AE

CIRCLIP PLIERS FOR EXTERNAL RETAINING RINGS

Form A

- > For retaining rings as per DIN 471, DIN 983
- > Straight jaws
- > Inside-positioned opening spring
- > Screwed joint connection
- > Indented tips made of highly wear-resistant rolling bearing steel



Code	No.	Shaft diameter mm	Shaft diameter "	Total length mm	Head length	Tip-Ø	Weight kg
2930668	8000 AE 1	10-25	3/8-1	145	39	1,3	0,127
2923602	8000 AE 2	19-60	3/4-2.3/8	185	57	1,8	0,198

8000 JE

CIRCLIP PLIERS FOR INTERNAL RETAINING RINGS

- > For retaining rings as per DIN 472, DIN 984
- > Straight jaws
- > Screwed joint connection
- > Indented tips made of highly wear-resistant rolling bearing steel



Code	No.	Shaft diameter mm	Shaft diameter "	Total length mm	Head length	Tip-Ø	Weight kg
2930765	8000 JE 1	12-25	3/8-1	140	41	1,3	0,08
2930773	8000 JE 2	19-60	3/4-2.3/8	180	54	1,8	0,155

4529

MULTI-USE CABLE KNIFE

- > For stripping round cables, 4 - 28 mm
- > Integrated stripping function for flexible and single-strand conductors
- > Automatic changeover of the blade from round to longitudinal cut without putting down the knife
- > The cutting depth of the pivoting internal knife is adjustable

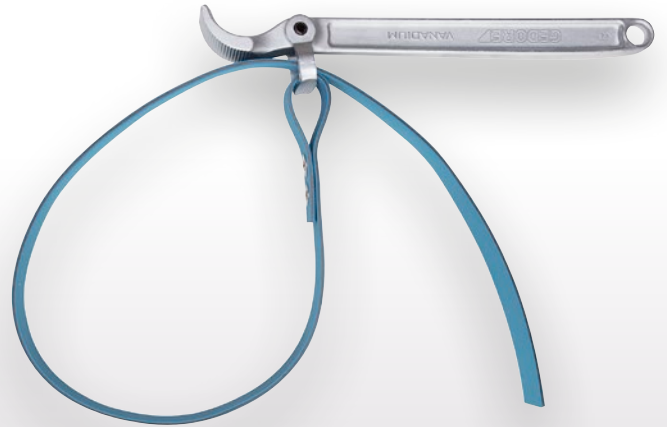


Code	No.	Total length mm	Weight kg
2955393	4529	145	0,15

36 2-200

STRAP WRENCH

- > With strong, non-slip fabric strap (E-36), extra wide = 25 mm



Code	No.	for (max.) Ø mm	for (max.) Ø inch
6327400	36 2-200	200	8"
Total length mm	Tape width mm	Weight kg	
295	25	0,61	

137 10

GRIP PLIERS

- > With adjusting screw and release lever, model 137 10 with blue dip-insulated lever
- > Forged, tempered jaws and special jaw shape for secure gripping, clamping and holding
- > Jaw body sheet steel with high strength
- > Automatically welded upper jaw - absolutely firm connection with the steel sheet body
- > Sophisticated jaw shape guarantees three-point support for any material cross section
- > No widening under most extreme loading
- > Safe release



Code	No.	Total length mm	Total length inch
6406700	137 10	230	10"
Clamping reach mm	Clamping reach inch	Weight kg	
32	1.1/4	0,53	

8154

STRIPMAX-PISTOL PROFESSIONAL WIRE STRIPPER

- > Self-adjusting cutting and stripping tool for cross-sections from 0.02 - 10 mm²/AWG 34 - 8, cassette with straight blade
- > Durable integrated cutting function
- > Cutting capacity: Flexible conductors, 10 mm²/8 AWG. Rigid conductors, 1.5 mm²/16 AWG
- > Fine adjustment option for removing thin and thick insulation without damaging the conductors
- > Easier ejection of the removed sheathing after stripping thanks to open stripping blades
- > Tool-free exchangeable stripping cassettes for a large and versatile stripping capacity



Code	No.	Cable cross-section mm ²	AWG	Weight kg
3416453	8154	0,02 - 10	34-8	0,51

1090

TOOL CASE ELECTRICIAN

87 pieces

> The perfect tool set for the electrician or property manager



6,3 1/4" mm

Code	No.	Length mm	Width mm	Height mm	Pieces	Weight kg
6601590	1090	490	395	185	87	13,155

Contents

6 14x17 18x19 21x23 22x24, 8-011 Double open-end spanner set 11 pieces 4,5-13mm, D 20 TMU-10 Socket set 1/4" 40 pieces UD-IN-IS-PH-PZ-TX H 42-10 Allen Key set in holder 10 pieces 1,3-10mm, 183 10 TC Pliers wrench 10", 142 10 TL Universal pliers 10" 15-way adjustable dip-insulated, VDE 2162 PZ 1 2, VDE 2162 PH 1 2 VDE 2172 3,5 4,0 5,5 6,5, 406 Hobby saw, 746 Carbide scriber, 4528 Cable knife, 4534-3 Steel tape measure 3 m, VDE 4616 Voltage tester 2-pole 1000V LED display VDE 8098-160 H VDE Wire stripper with sleeve insulation 160 mm, VDE 8250-180 H VDE Power combination pliers with sleeve insulation 180 mm VDE 8131 AB-200 H VDE Multiple pliers 200mm gewinkelt with sleeve insulation, VDE 8316-200 H VDE Power side cutter 200 mm, sleeve insulation, 95-175 Flat chisel flat oval, 175x20x12 mm 600 H-300 Engineer's hammer ROTBAND-PLUS with hickory handle, 300 g, 45 S Multi fitting key Universal, WK 1041 L Tool case large empty

1100-1094

VDE TOOL ASSORTMENT HYBRID

53 pieces

- > The perfect tool kit for maintenance and repairs on hybrid and electric vehicles
- > Suitable for vehicles of all manufacturers
- > All tools are protective insulated to EN 60900/EC 60900
- > GEDORE L-BOXX® 136 is compatible to the Sortimo® vehicle equipment in your service car



Code	No.	Length mm	Width mm	Height mm	Pieces	Weight kg
2979063	1100-1094	444	360	152	53	8,28

Contents

3/8" VDE Socket No. VDE 30, 6 8 9 10 11 12 13 14 15 16 17 18 19 20 22 mm
 3/8" VDE Screwdriver bit socket No. VDE INX 30, 8 10 12 mm
 3/8" VDE Extension No. VDE 3090 -3 -6, 75 150 mm
 3/8" VDE Reversible ratchet No. VDE 3093 U
 VDE Screwdriver slotted No. VDE 2170, 2,5 3,5 4 5,5 mm
 VDE Screwdriver philips No. VDE 2160 PH 1 2 3
 VDE Screwdriver TX No. VDE 2163 TX T20 T25 T30
 VDE Cable cutter No. VDE 8094, 200 mm
 VDE Universal pliers No. VDE 146 10, 10"
 VDE Power combination pliers No. VDE 8250-200 H, 200 mm
 2-Component handle VDE Power side cutter No. VDE 8314-180 H, 180 mm
 VDE Flat nose pliers No. VDE 8132 AB-200 JC, 200 mm angled
 2-Component handle VDE Flat nose pliers No. VDE 8120-160 H, 160 mm
 2-Component handle VDE cable knife No. VDE 4522, 180 mm
 Counter sleeve No. V 914, size 1 2 3

10 3/8" 1000V



VDE 2162-2172 PM-06

VDE SCREWDRIVER SET SLIM DRIVE

6 pieces

- > For slotted, cross-head PH and plus-minus screws
- > Ultra-small blade diameter yet with full mechanical and electrical safety
- > Insulated up to 1000 V, according to EN 60900/IEC 60900, fully insulated blade
- > Ergonomic 3-component handle Power-Grip³ for maximum power transmission with minimum stress on the hand



Code	No.	Contents	Pieces	Weight kg
2928701	VDE	VDE 21723,5 4 5,5	6	0,57
	2162-2172	VDE 2162 PH 1 2		
	PM-06	VDE 2164 5L/PH2		

VDE 2162-2172 PZ-06

VDE SCREWDRIVER SET SLIM DRIVE

6 pieces

- > For slotted and cross-head screws PZ
- > Ultra-small blade diameter yet with full mechanical and electrical safety
- > Insulated up to 1000 V, according to EN 60900/IEC 60900, fully insulated blade
- > Ergonomic 3-component handle Power-Grip³ for maximum power transmission with minimum stress on the hand



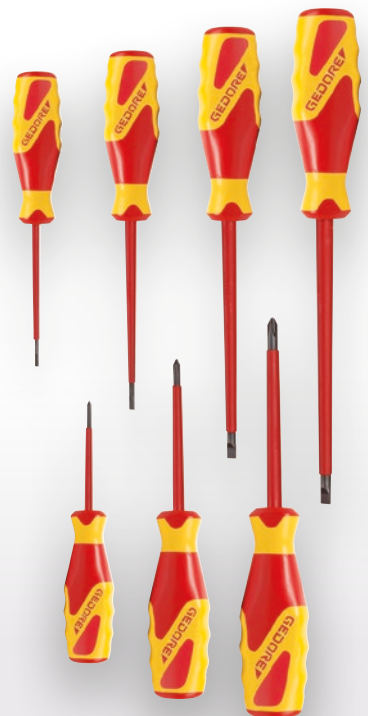
Code	No.	Contents	Pieces	Weight kg
2928728	VDE	VDE 21723,5 4 5,5 6,5	6	0,6
	2162-2172	VDE 2162 PZ1 2		
	PZ-06			

VDE 2170-2160 PH-077

VDE SCREWDRIVER SET

7 pieces

- > Type of drive and size marked at end of the handle
- > Protective insulation up to 1000V AC according to DIN EN/IEC 60900, fully insulated blade
- > Ergonomic handle shape for accurate, non-tiring work
- > Positive-fit joint of handle and blade for optimum transmission of force



Code	No.	Contents	Pieces	Weight kg
1616048	VDE	VDE 2170 2,5 4 5,5 6,5 mm	7	0,6
	2170-2160	VDE 2160 PH 0 1 2		
	PH-077			

VDE 183 10

VDE-PLIERS WRENCH

- › Adjustable, universal tool for wrenching work, bending, holding, pressing and gripping
- › Smooth jaws for gentle gripping of surface-sensitive workpieces (e.g. chrome-plated screw connections, bathroom fittings)
- › Function of an open-end ratchet
- › Unique functional jaw holder, e.g. for protective jaws
- › 21 setting positions and quick adjustment with automatic engagement function
- › VDE insulated up to 1000 V, in accordance with EN 60900/IEC 60900, double-checked tool insulation
- › DIN ISO 5743/IEC 60900



Code	No.	Size	Clamping reach mm	Length mm	Weight kg
3066088	VDE 183 10	10	50	250	0,68

1102-005 VDE

VDE PLIERS SET

3 pieces

- › Insulated up to 1000 V, according to EN 60900/IEC 60900
- › Envelope insulation
- › With VDE Impact diagonal cutter and VDE multiple nose pliers
- › With SLIM DRIVE VDE screwdriver for PZ Phillips screws
- › With Slim PZ screwdriver, VDE multiple nose pliers and VDE Impact diagonal cutter
- › In GEDORE L-BOXX® Mini, including range of dividers
- › Suitable for the storage of small parts



Code	No.	Contents	Pieces	Weight kg
2951762	1102-005 VDE	VDE 8314-180 H VDE 8131 AB-200 H VDE 2162 PZ 1	3	0,955

VDE S 8003 H

VDE PLIERS SET

with VDE insulating sleeves
3 pieces

- › Practical set composition
- › Handles with VDE insulating sleeves up to 1000 V, acc. to EN 60900/IEC 60900



Code	No.	Contents	Pieces	Weight kg
1550594	VDE S 8003 H	VDE 8132-160 H VDE 8250-180 H VDE 8314-160 H	3	0,747



VDE 8092-160 H VDE CABLE SHEARS

- › For cutting multi-core copper and aluminium cables up to max. 50 mm² or up to a Ø of 10 mm
- › Handles with VDE insulating sleeves up to 1000 V, acc. to EN 60900/IEC 60900
- › Precision grinding for optimum transmission
- › Hardness 55 HRC



Code	No.	Cable cross-section mm ²	Cable diameter mm	Total length mm	Total length inch	Weight kg
3412407	VDE 8092-160 H	50	10	160	6 2/3"	0,21

VDE 8098-160 H VDE STRIPPING PLIERS with insulating sleeves

- › V-shaped cutting jaws for stripping solid and stranded conductors
- › Easy adjustment to the required wire or strand diameter by means of the set screw and lock nut
- › For wires from 0.5 to 10.0 mm²
- › With scale for easy measurement of stripping length
- › Handles with VDE insulating sleeves up to 1000 V, acc. to EN 60900/IEC 60900



Code	No.	Length mm	Jaw length mm	Head width mm	Head thickness mm	Cable cross-section mm ²	Weight kg
1552074	VDE 8098-160 H	160	43,5	18,5	8,5	0,5-10,0	0,204

VDE 8131 AB-200 H

VDE MULTIPLE PLIERS

with VDE insulating sleeves, angled pattern

- > Multifunction pliers: holding, cutting, stripping, crimping, bending, twisting, and pressing
- > Cable cutter, cables up to $5 \times 2.5 \text{ mm}^2$ or $\varnothing 12 \text{ mm}$
- > Stripping blades for wires 1.5 mm^2 and 2.5 mm^2
- > Crimping profile: Crimping of ferrules
- > Protective insulation up to 1000 V, according to EN 60900/IEC 60900
- > Toothed gripping face: special holding capacity when pulling cables and wires during installations
- > Angled plier tip: easy on the wrist and allows full view of the workpiece



Code	No.	Total length mm	Weight kg
2910845	VDE 8131 AB-200 H	200	0,245

Cutting values

Hard wire: 1,6 mm / 14 AWG, Medium hard wire: 3 mm / 9 AWG
Cu cable, multi wire cross section: $5 \times 2.5 \text{ mm}^2$, Multi-wire cable \varnothing : 12 mm

VDE 8132-200 H

VDE TELEPHONE PLIERS

with sheath insulation, straight

- > Long, flat-round jaws, straight gripping faces, serrated
- > For holding, gripping, bending and cutting
- > Induction-hardened precision cutting edges, hardness 61 - 63 HRC
- > GEDORE special hardened and tempered steel, drop-forged, oil-hardened and annealed
- > Handles with VDE insulating sleeves up to 1000 V, acc. to EN 60900/IEC 60900



Code	No.	Length mm	Jaw length mm	Head width mm	Tip width mm
1552120	VDE 8132-200 H	200	75,7	18,5	3,7

Head thickness mm	Tip thickness mm	Cutting values	Weight kg
9,5	2,8	Hard wire: 2,2 mm / 11 AWG Medium hard wire: 3,2 mm / 8 AWG	0,235

VDE 8250-180 H

VDE POWER COMBINATION PLIERS

with insulating sleeves

- > Induction-hardened precision cutting edges, hardness 62 - 64 HRC
- > With gripping zones for flat and round material for versatile use
- > Powerful gripping, easier cutting, bending, and pulling
- > High cutting performance with 35% less effort
- > Legs VDE insulated up to 1000 V, according to EN 60900/IEC 60900, 2-component handle protection sleeves



Code	No.	Length mm	Jaw length mm	Head width mm	Tip width mm
1550950	VDE 8250-180 H	180	38,5	25,6	6,5

Head thickness mm	Cutting values	Weight kg
11,0	Piano wire: 2 mm / 12 AWG, Hard wire: 2 mm / 12 AWG Medium hard wire: 3,4 mm / 8 AWG, Soft wire: 5 mm / 4 AWG Cu cable, multi wire cross section: 16 mm^2 Multi-wire cable \varnothing : 11 mm	0,288

VDE 8316-180 H

VDE POWER SIDE CUTTER

with insulating sleeves

- > Optimised leverage for easier cutting of material
- > Induction-hardened precision cutting edges, hardness 63 - 65 HRC
- > GEDORE special hardened and tempered steel, drop-forged, oil-hardened and annealed
- > Legs insulated up to 1000 V, to EN 60900/IEC 60900, 2-component protective handle covers



Code	No.	Length mm	Jaw length mm	Head width mm
1550993	VDE 8316-180 H	180	22,6	26,0

Head thickness mm	Cutting values	Weight kg
11,0	Piano wire: 1,8 mm / 13 AWG Hard wire: 2,7 mm / 10 AWG Medium hard wire: 3,8 mm / 7 AWG	0,267

OX 635 H-3009

WOOD SPLITTING HAMMER PROFESSIONAL BIG OX®

- > With ROTBAND-PLUS handle fastening
- > Forged hammer head with reversible nose and extra large striking surface, e.g. for driving wedges
- > With high-quality, swell-end handle made of hickory wood and blade protection



Code	No.	Test seal	Weight of head g	Blade width mm	Handle length	Weight kg
1707663	OX 635 H-3009	KWF PRO GS	3000	70,0	900	4,35

OX 620 H-1257

UNIVERSAL FORESTRY AXE ROTBAND-PLUS

Rhineland pattern

- > Indispensable in wood-working and gardening
- > With patented handle join ROTBAND-PLUS: Handle sleeve, tapered collar, fixing plate and wood screw bond the hammer head and the handle into one unit and ensure an optimum in safety
- > In addition, the long steel handle protection sleeve protects the handle in case of misses and guarantees a long service life
- > Finely polished axe head with blade guard
- > With high-quality handle in cow's foot shape made of hickory wood



Code	No.	Test seal	Weight of head g
1879812	OX 620 H-1257	KWF STD GS	1250
Blade width mm	Handle length	Weight kg	
120,0	700	2,27	

OX 648 H-1257

SPALT-FIX®-AXT ROTBAND-PLUS

- > Optimum splitting result with low effort due to wedge-shaped blade design
- > With ROTBAND-PLUS handle fastening
- > With high-quality handle made of hickory wood



Code	No.	Test seal	Weight of head g
1962396	OX 648 H-1257	KWF STD GS	1250
Blade width mm	Handle length	Weight kg	
100,0	700	1,85	

GEDORE Werkzeugfabrik GmbH & Co. KG

Remscheider Straße 149
42899 Remscheid · GERMANY
Tel. + 49 (0) 21 91- 596 - 0
Fax + 49 (0) 21 91- 596 - 230
info@gedore.com
www.gedore.com

Vertrieb Deutschland
Tel. + 49 (0) 21 91- 596 - 900
Fax + 49 (0) 21 91- 596 - 999

GEDORE Automotive GmbH

Breslauer Straße 41
78166 Donaueschingen · GERMANY
Tel. +49 771 83223-0
Fax +49 771 83223-90
info.gam@gedore.com
www.gedore-automotive.com

GEDORE Torque Solutions GmbH

Bertha-Benz-Straße 12
71665 Vaihingen/Enz · GERMANY
T +49 7042 9441-0
F +49 7042 9441-41
torque-solutions@gedore.com

GEDORE AUSTRIA GmbH

Gedore-Str. 1
8190 Birkfeld / Stmk. · AUSTRIA
Tel. +43 (0) 3174 / 363 64 00
Fax +43 (0) 3174 / 363 83 20
sales.austria@gedore.com
www.gedore.at

GEDORE Tools S.A. (Pty) Ltd.

103 Qashana Khuzwayo (Shepstone) Road,
New Germany, 3610 - South Africa
PO Box 68, New Germany, 3620
SOUTH AFRICA
Tel. +27 (0) 31 / 705 3587
Fax +27 (0) 31 / 705 32770
esales@gedore.co.za
www.gedore.co.za

GEDORE IBÉRICA S.L.

c/Arangutxi 12, Poligono Industrial de Júndiz
01015 Vitoria Alava · SPAIN
Tel. +34-945-29 22 62
Fax +34-945-29 21 99
gedore@gedore.es
www.gedore.es

GEDORE Torque Ltd

(Formerly Gedore UK)
Tannery Lane, Gosden Common
Bramley, Guildford
Surrey
GU5 0AJ · UNITED KINGDOM
Tel. +44 (0) 1756 / 70 67 00
sales@gedoreuk.com
www.gedoreuk.com

GEDORE France SARL

Parc d'activités des Béthunes - La Mare II
10, avenue du Fief - Bât. 12
BP 79144 Saint-Ouen-l'Aumône
F-95074 Cergy Pontoise Cedex · FRANCE
Tél. +33 (0)1 34 40 16 60
jadore@gedore.fr
www.gedore.com

GEDORE TECHNAG B.V.

Flemingweg 7, 2408 AV
Alphen aan den Rijn · NETHERLANDS
Tel. +31 (0) 172 / 42 73 50
Fax +31 (0) 172 / 42 73 60
info@gedore.nl
www.gedore.nl

GEDORE (INDIA) Private Limited

148, Sector 3, IMT Manesar
Gurgaon – 122051
Haryana · INDIA
Tel. +91 (0) 124 22910 – 65/66/67
Fax +91 124 2341067
sales@gedoreindia.com
www.gedore.in

GEDORE POLSKA Sp. z o.o.

ul. Żwirki i Wigury 56a
43-190 Mikołów · POLAND
Tel. +48 (0) 32 / 738-40 10
Fax +48 (0) 32 / 738-40 20
gedore@gedore.pl
www.gedore.pl

Ferramentas GEDORE do Brasil S.A.

Rua Vicentina Maria Fidélis,
275 Bairro Vicentina
São Leopoldo - RS | 93025-340 · BRAZIL
Tel. +55 51- 3589 9200
Fax + 55 51- 3589 9222
export@gedore.com.br
www.gedore.com.br

GEDORE TOOLS

300 Langner Rd
Suite 250
West Seneca, NY 14224 · USA
Phone: +1 (843) 225 5015
Fax: +1 (843) 300 0315
info@gedorettools.com
www.gedorettools.com

GEDORE Tool Trading (Shanghai) Co., Ltd.

1/F, Block 2, 1358 Pingan Road,
Minhang, Shanghai · CHINA 201109
Tel. +86-21-3388 7258
Fax +86-21-3388 7259
Service Hotline: 400 880 1858
info@gedore.cn
www.gedore.cn

Brands of the GEDORE Group
gedore.com · ochsenkopf.com

MAGIC 2026 TOOL PROMOTION valid
from 01/04/2026 until 31/12/2026.
While stocks last.

*Delivery without decoration. Technical specifications subject to modifications.
No liability for printing errors. Please ask your local dealer.